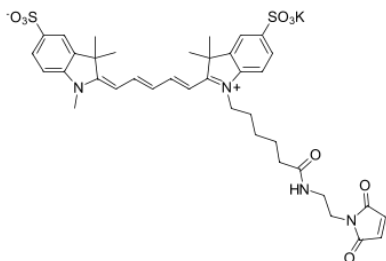


## Sulfo-Cyanine5 maleimide

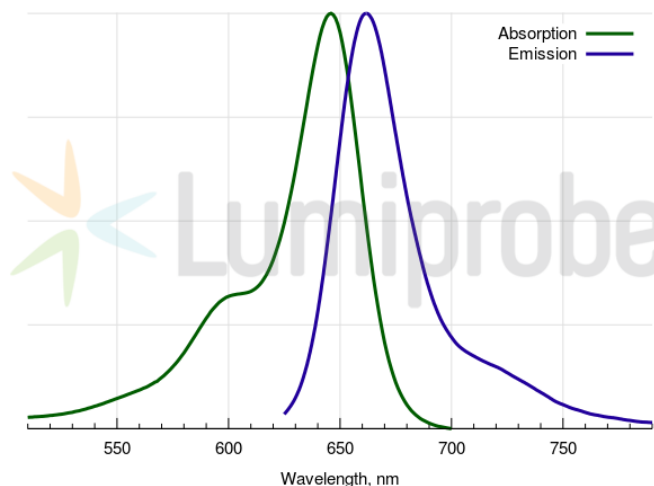
<http://www.lumiprobe.com/p/sulfo-cy5-maleimide>

A water soluble, hydrophilic sulfo-Cyanine5 maleimide (Cy5® maleimide analog). We recommend this product for protein labeling, including labeling of antibodies as a perfect replacement for Cy5® maleimide. Labeled proteins can be easily separated from unreacted dye by gel filtration, spin column purification, dialysis, electrophoresis or chromatography.

An analog without sulfo groups, [Cyanine5 maleimide](#), is also available.



**Sulfo-Cyanine5 maleimide structure**



**Sulfo-Cyanine5 absorbance and emission spectra**

### General properties

Appearance:	dark blue powder
Molecular weight:	803.00
CAS number:	2242791-82-6 (potassium salt); 2130955-10-9 (inner salt); 2242791-81-5 (inner salt); 2301999-22-2 (sodium salt)
Molecular formula:	C <sub>38</sub> H <sub>43</sub> KN <sub>4</sub> O <sub>9</sub> S <sub>2</sub>
Solubility:	soluble in water, DMSO, DMF
Quality control:	NMR <sup>1</sup> H, HPLC-MS (95+%)
Storage conditions:	Storage: 24 months after receipt at -20°C in the dark. Transportation: at room temperature for up to 3 weeks. Avoid prolonged exposure to light. Desiccate.
TN VED Code:	3204190000

### Spectral properties

Excitation maximum, nm:	646
ε, L·mol <sup>-1</sup> ·cm <sup>-1</sup> :	271000
Emission maximum, nm:	662
Fluorescence quantum yield:	0.28
CF <sub>260</sub> :	0.04
CF <sub>280</sub> :	0.04

Cy® is a trademark of GE Healthcare.