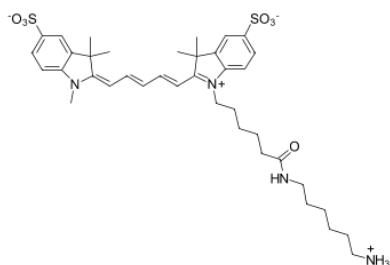


sulfo-Cyanine5 amine

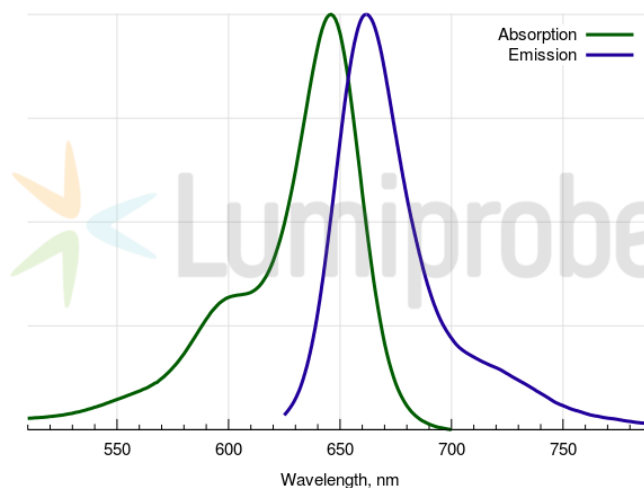
<http://www.lumiprobe.com/p/sulfo-cy5-amine>

Water soluble amino dye for enzymatic transamination labeling and other couplings with electrophiles. Cyanine5 is a popular fluorophore that is compatible with different fluorescence measuring instruments.

sulfo-Cyanine5 derivatives possess good water solubility.



Sulfo-Cyanine5 amine structure



Sulfo-Cyanine5 absorbance and emission spectra

General properties

| | |
|---------------------|--|
| Appearance: | dark blue solid |
| Molecular weight: | 740.98 |
| CAS number: | 2183440-44-8 |
| Molecular formula: | C ₃₈ H ₅₂ N ₄ O ₇ S ₂ |
| IUPAC name: | 3H-Indolium, 1-[6-[(6-aminohexyl)amino]-6-oxohexyl]-2-[5-(1,3-dihydro-1,3,3-trimethyl-5-sulfo-2H-indol-2-ylidene)-1,3-pentadien-1-yl]-3,3-dimethyl-5-sulfo-, inner salt |
| Solubility: | moderate in water, well soluble in DMF, DMSO, alcohols |
| Quality control: | NMR ¹ H, HPLC-MS (95%) |
| Storage conditions: | Storage: 24 months after receipt at -20°C in the dark. Transportation: at room temperature for up to 3 weeks. Avoid prolonged exposure to light. Desiccate. |
| Legal statement: | This Product is offered and sold for research purposes only. It has not been tested for safety and efficacy in food, drug, medical device, cosmetic, commercial or any other use. Supply does not express or imply authorization to use for any other purpose, including, without limitation, in vitro diagnostic purposes, in the manufacture of food or pharmaceutical products, in medical devices or in cosmetic products. |

Spectral properties

| | |
|--|--------|
| Excitation/absorption maximum, nm: | 646 |
| ε, L·mol ⁻¹ ·cm ⁻¹ : | 271000 |
| Emission maximum, nm: | 662 |
| Fluorescence quantum yield: | 0.28 |
| CF ₂₆₀ : | 0.04 |
| CF ₂₈₀ : | 0.04 |