

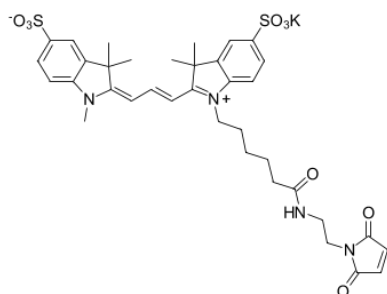
## sulfo-Cyanine3 maleimide

<http://www.lumiprobe.com/p/sulfo-cy3-maleimide>

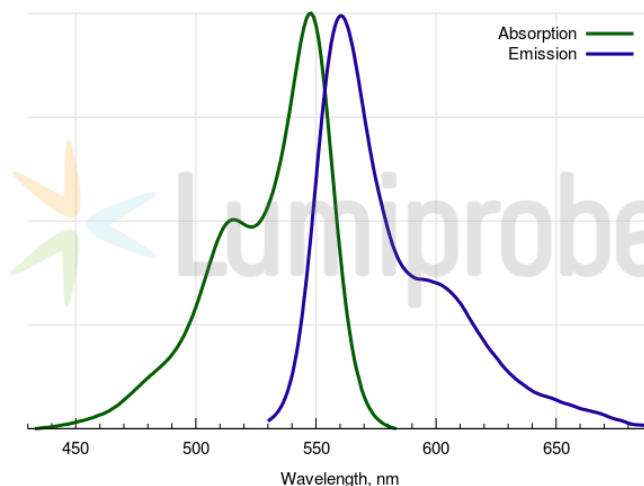
sulfo-Cyanine3 maleimide is a water-soluble, thiol-reactive dye for labeling. This is an analog of Cy3® maleimide.

This product is recommended for labeling antibodies and other labile proteins in mild, purely aqueous conditions. The dye is water soluble and does not require organic co-solvent.

A non-sulfonated [Cyanine3 maleimide](#) is available.



**Sulfo-Cyanine3 maleimide**



**Sulfo-Cyanine3 maleimide**

### General properties

Appearance:	red powder
Molecular weight:	776.96
CAS number:	1656990-68-9
Molecular formula:	C <sub>36</sub> H <sub>41</sub> KN <sub>4</sub> O <sub>9</sub> S <sub>2</sub>
IUPAC name:	3H-Indolium, 2-[3-[1-[6-[[2-(2,5-dihydro-2,5-dioxo-1H-pyrrol-1-yl)ethyl]amino]-6-oxohexyl]-1,3-dihydro-3,3-dimethyl-5-sulfo-2H-indol-2-ylidene]-1-propen-1-yl]-1,3,3-trimethyl-5-sulfo-, inner salt, potassium salt
Solubility:	soluble in water (0.39 M = 30 g/L), DMF, DMSO
Quality control:	NMR <sup>1</sup> H, HPLC-MS (95+%)
Storage conditions:	Storage: 24 months after receipt at -20°C in the dark. Transportation: at room temperature for up to 3 weeks. Avoid prolonged exposure to light. Desiccate.

### Spectral properties

Excitation/absorption maximum, nm:	548
ε, L·mol <sup>-1</sup> ·cm <sup>-1</sup> :	162000
Emission maximum, nm:	563
Fluorescence quantum yield:	0.1
CF <sub>260</sub> :	0.03
CF <sub>280</sub> :	0.06

Cy® is a trademark of GE Healthcare.