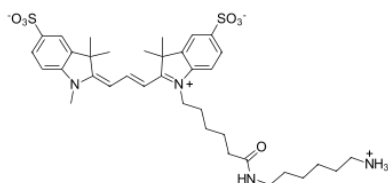


## sulfo-Cyanine3 amine

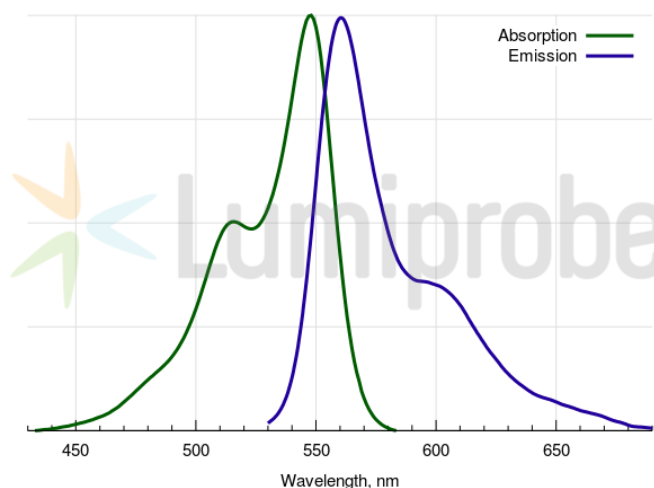
<http://www.lumiprobe.com/p/sulfo-cy3-amine>

A water-soluble dye with an amino group that is useful for the conjugation with electrophiles and for enzymatic transamination labeling.

sulfo-Cyanine3 is a sulfonated analog of Cy3®, which is compatible with various fluorescence measuring equipment. The dye is highly photostable. It is also easily detectable by the naked eye.



**Sulfo-Cy3 amine structure**



**Sulfo-Cy3 absorbance and emission spectra**

### General properties

Appearance:	dark red solid
Molecular weight:	714.94
CAS number:	2183440-43-7
Molecular formula:	C <sub>36</sub> H <sub>50</sub> N <sub>4</sub> O <sub>7</sub> S <sub>2</sub>
IUPAC name:	3H-Indolium, 1-[6-[(6-aminohexyl)amino]-6-oxohexyl]-2-[3-(1,3-dihydro-1,3,3-trimethyl-5-sulfo-2H-indol-2-ylidene)-1-propen-1-yl]-3,3-dimethyl-5-sulfo-, inner salt
Solubility:	well soluble in water (0.49 M = 350 g/L), alcohols, DMSO, DMF
Quality control:	NMR <sup>1</sup> H, HPLC-MS (95%)
Storage conditions:	Storage: 24 months after receipt at -20°C in the dark. Transportation: at room temperature for up to 3 weeks. Avoid prolonged exposure to light. Desiccate.
Legal statement:	This Product is offered and sold for research purposes only. It has not been tested for safety and efficacy in food, drug, medical device, cosmetic, commercial or any other use. Supply does not express or imply authorization to use for any other purpose, including, without limitation, in vitro diagnostic purposes, in the manufacture of food or pharmaceutical products, in medical devices or in cosmetic products.

### Spectral properties

Excitation/absorption maximum, nm:	548
ε, L·mol <sup>-1</sup> ·cm <sup>-1</sup> :	162000
Emission maximum, nm:	563
Fluorescence quantum yield:	0.1
CF <sub>260</sub> :	0.03
CF <sub>280</sub> :	0.06