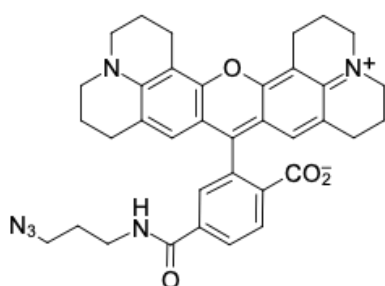


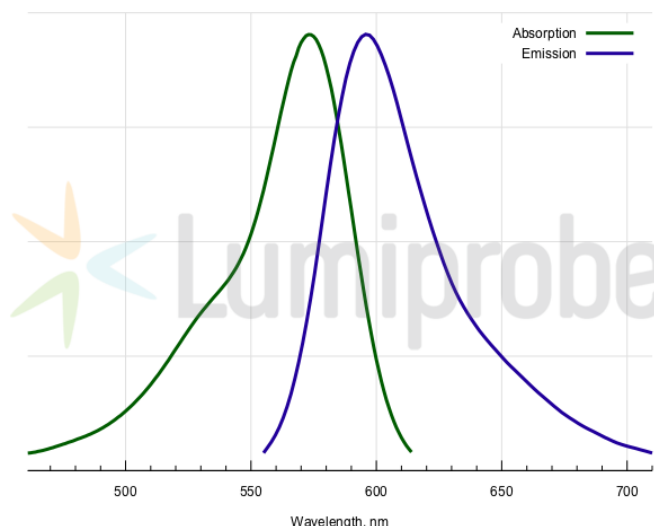
ROX azide, 6-isomer

<http://www.lumiprobe.com/p/rox-azide-6>

ROX azide is an alkyne-reactive derivative of ROX (Rhodamine X, Rhodamine 101) dye. ROX is a red-emitting fluorophore possessing high brightness and fluorescence quantum yield. This reagent is a pure 6-isomer. It is used for labeling alkyne and cycloalkyne-containing biomolecules via copper-catalyzed and copper-free click chemistry reactions.



Structure of ROX azide, 6-isomer



Absorption and emission spectra of ROX

General properties

Appearance:	green powder
Molecular weight:	616.72
CAS number:	1422178-12-8
Molecular formula:	C ₃₆ H ₃₆ N ₆ O ₄
Solubility:	good in polar organic solvents (DMF, DMSO, alcohols), low in water
Quality control:	NMR ¹ H and HPLC-MS (95+%)
Storage conditions:	24 months after receipt at -20°C in the dark. Transportation: at room temperature for up to 3 weeks. Desiccate. Avoid prolonged exposure to light.
Legal statement:	This Product is offered and sold for research purposes only. It has not been tested for safety and efficacy in food, drug, medical device, cosmetic, commercial or any other use. Supply does not express or imply authorization to use for any other purpose, including, without limitation, in vitro diagnostic purposes, in the manufacture of food or pharmaceutical products, in medical devices or in cosmetic products.

Spectral properties

Excitation/absorption maximum, nm:	570
ε, L·mol ⁻¹ ·cm ⁻¹ :	93000
Emission maximum, nm:	591
Fluorescence quantum yield:	1.0
CF ₂₆₀ :	0.62
CF ₂₈₀ :	0.49