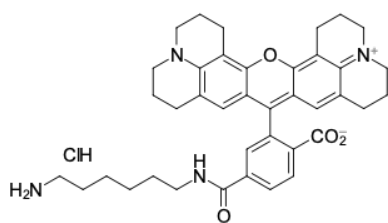


## ROX amine, 6-isomer

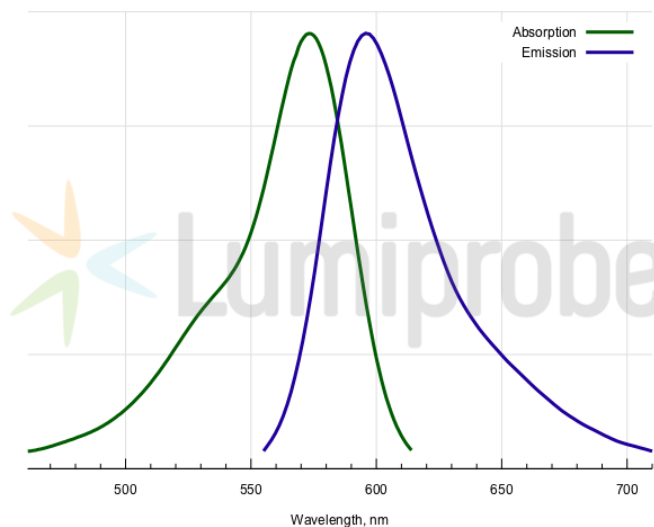
<http://www.lumiprobe.com/p/rox-amine-6>

This product is an amine derivative of ROX (Rhodamine X, Rhodamine 101) dye with an amine group separated from the fluorophore by a long linker that facilitates conjugation. The aliphatic primary amine group can be coupled with various electrophiles (activated esters, epoxides, etc.) and used in enzymatic transamination labeling.

ROX is a red-emitting fluorophore possessing high brightness and fluorescence quantum yield. This reagent is a pure 6-isomer.



**Structure of ROX amine, 6-isomer**



**Absorption and emission spectra of ROX**

### General properties

Appearance:	violet powder
Molecular weight:	669.27
Molecular formula:	C <sub>39</sub> H <sub>45</sub> ClN <sub>4</sub> O <sub>4</sub>
Solubility:	good in DMSO, DMF
Quality control:	NMR <sup>1</sup> H and HPLC-MS (95+%)
Storage conditions:	24 months after receipt at -20°C in the dark. Transportation: at room temperature for up to 3 weeks. Desiccate. Avoid prolonged exposure to light.

### Spectral properties

Excitation/absorption maximum, nm:	570
$\epsilon$ , L·mol <sup>-1</sup> ·cm <sup>-1</sup> :	93000
Emission maximum, nm:	591
Fluorescence quantum yield:	1.0
CF <sub>260</sub> :	0.62
CF <sub>280</sub> :	0.49