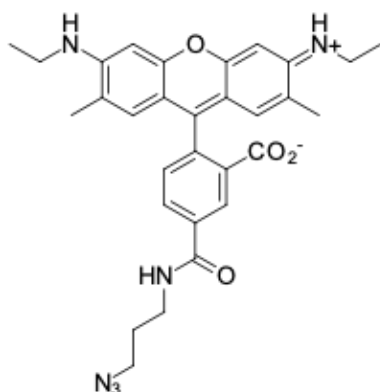


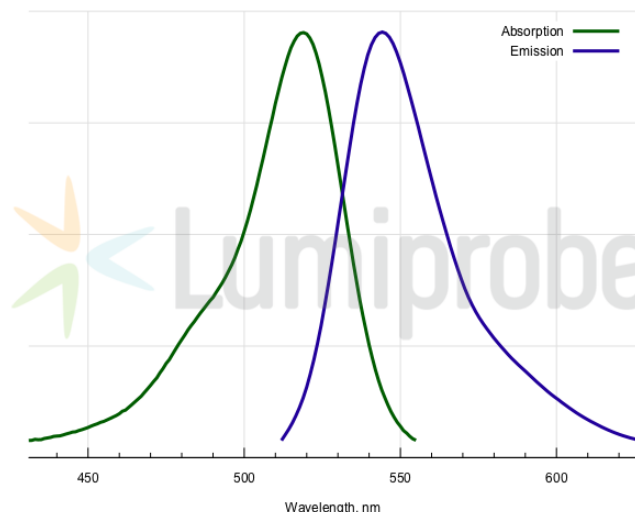
## R6G azide, 5-isomer

<http://www.lumiprobe.com/p/r6g-azide-5>

R6G (rhodamine 6G) is a yellow emitting xanthene dye. It has been used for DNA sequencing before. Now this dye is often used for qPCR. This is a pure 5-isomer of R6G with azide group.



**Structure of 5-R6G azide**



**Absorption and emission spectra for 5-R6G**

### General properties

Appearance:	orange to brown powder
Mass spec M+ increment:	540.3
Molecular weight:	540.61
CAS number:	2135330-71-9
Molecular formula:	C <sub>30</sub> H <sub>32</sub> N <sub>6</sub> O <sub>4</sub>
Solubility:	good in DMF, DMSO, alcohols
Quality control:	NMR <sup>1</sup> H, HPLC-MS (95%)
Storage conditions:	Storage: 24 months after receipt at -20°C in the dark. Transportation: at room temperature for up to 3 weeks. Avoid prolonged exposure to light. Desiccate.
Legal statement:	This Product is offered and sold for research purposes only. It has not been tested for safety and efficacy in food, drug, medical device, cosmetic, commercial or any other use. Supply does not express or imply authorization to use for any other purpose, including, without limitation, in vitro diagnostic purposes, in the manufacture of food or pharmaceutical products, in medical devices or in cosmetic products.

### Spectral properties

Excitation/absorption maximum, nm:	519
ε, L·mol <sup>-1</sup> ·cm <sup>-1</sup> :	116000
Emission maximum, nm:	546
Fluorescence quantum yield:	0.95
CF <sub>260</sub> :	0.18
CF <sub>280</sub> :	0.17