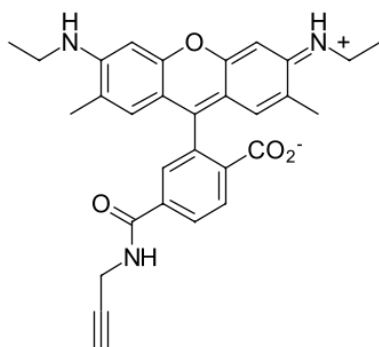


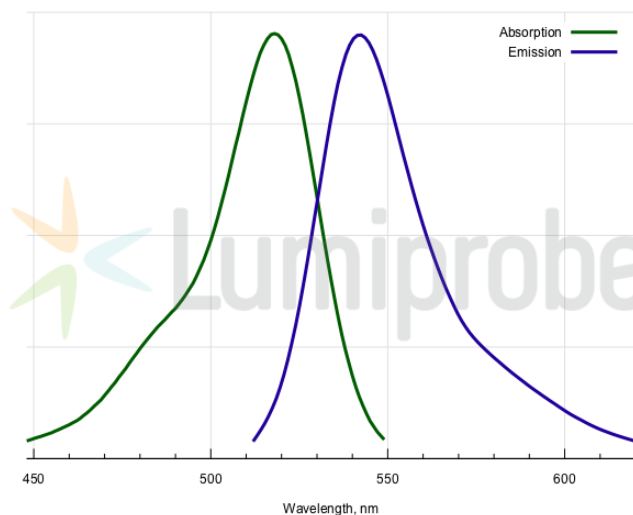
R6G alkyne, 6-isomer

Rhodamine 6G (R6G) is a xanthene dye of rhodamine series. Compared to fluorescein, its emission is shifted to red. It is also much more photostable. The fluorophore has a high quantum yield.

This R6G product contains a terminal alkyne moiety for the conjugation with azides in the presence of copper (I) catalyst.



Structure of 6-R6G alkyne



Absorption and emission spectra of 6-R6G

General properties

Appearance:	dark colored solid
Mass spec M+ increment:	494.2
Molecular weight:	495.57
Molecular formula:	C ₃₀ H ₂₉ N ₃ O ₄
Solubility:	good in DMF, DMSO, alcohols
Quality control:	NMR ¹ H, HPLC-MS (95%)
Storage conditions:	Storage: 24 months after receipt at -20°C in the dark. Transportation: at room temperature for up to 3 weeks. Avoid prolonged exposure to light. Desiccate.

Spectral properties

Excitation maximum, nm:	518
ε, L·mol ⁻¹ ·cm ⁻¹ :	116000
Emission maximum, nm:	542
Fluorescence quantum yield:	0.95
CF ₂₆₀ :	0.18
CF ₂₈₀ :	0.17