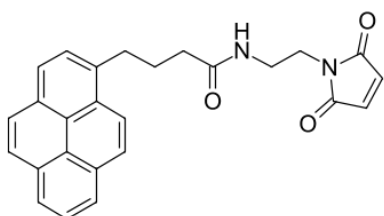


Pyrene maleimide

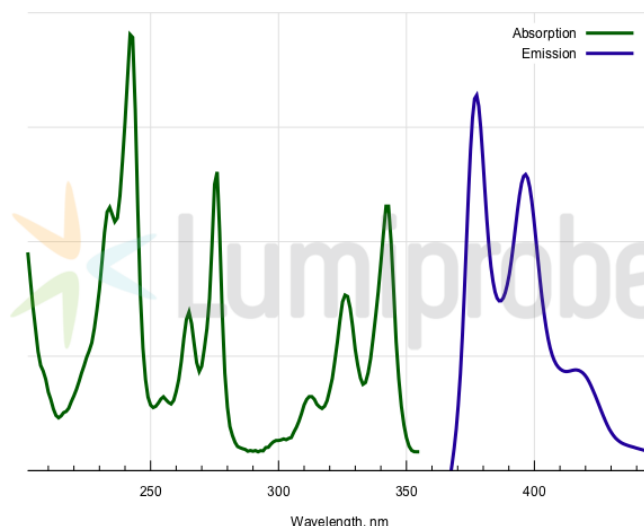
<http://www.lumiprobe.com/p/pyrene-maleimide>

Pyrene is a fluorescent hydrocarbon which emits in blue region. This is a maleimide derivative of pyrenebutyric acid which reacts with thiols.

Pyrene is a useful proximity probe because two pyrene residues close to each other exhibit strong excimer fluorescence.



Structure of Pyrene maleimide



Absorption and emission spectra of pyrene fluorophore

General properties

Appearance:	off white solid
Mass spec M+ increment:	410.2
Molecular weight:	410.46
CAS number:	1869968-64-8
Molecular formula:	C ₂₆ H ₂₂ N ₂ O ₃
Solubility:	well soluble in chlorinated organic solvents
Quality control:	NMR ¹ H, HPLC-MS (95%)
Storage conditions:	Storage: 24 months after receipt at -20°C in the dark. Transportation: at room temperature for up to 3 weeks. Avoid prolonged exposure to light. Desiccate.

Spectral properties

Excitation/absorption maximum, nm:	343; 326; 313; 276; 265; 242; 234
Emission maximum, nm:	377; 397