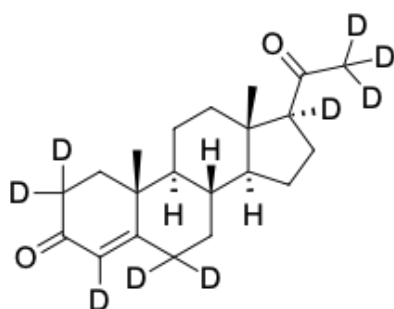


Progesterone-d9

<http://www.lumiprobe.com/p/progesterone-d9>

Progesterone is the biosynthetic precursor of all other steroid hormones, that is commonly produced by the adrenal cortex as well as the gonads. Progesterone is a derivative of cholesterol and has numerous functions in the human body, especially within the reproductive system. Progesterone test is useful to predict early pregnancy outcome for women who are experiencing early pregnancy problems. Progesterone also plays a role in increasing levels of molecules that are significant in signaling transduction pathways such as EGFR, further elevating the risk of developing breast cancer due to the sensitization of these proliferative processes. Low levels of progesterone and progesterone receptor expression also plays a role in the development of ovarian cancer.



Structure of Progesterone-d9

General properties

Appearance: white powder

Molecular weight: 323.52

CAS number: 15775-74-3

Molecular formula: $C_{21}H_{21}D_9O_2$

Solubility: DMSO

Quality control: NMR 1H and HPLC-MS (95+ %, D: 98+ %)

Storage conditions: 24 months after receipt at -20°C in the dark. Transportation: at room temperature for up to 3 weeks. Desiccate.

Legal statement: This Product is offered and sold for research purposes only. It has not been tested for safety and efficacy in food, drug, medical device, cosmetic, commercial or any other use. Supply does not express or imply authorization to use for any other purpose, including, without limitation, in vitro diagnostic purposes, in the manufacture of food or pharmaceutical products, in medical devices or in cosmetic products.