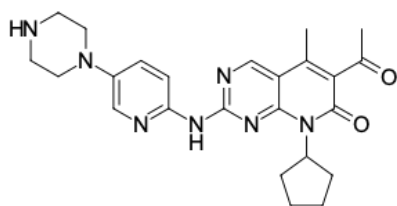


Palbociclib

<http://www.lumiprobe.com/p/palbociclib-571190-30-2>

Palbociclib is a reversible, highly selective inhibitor of cyclin-dependent kinases 4 and 6 (CDK4/6). The drug is used exclusively in combination with other agents for the treatment of hormone receptor-positive, HER2-negative advanced-stage breast cancer (depending on the line of therapy, it is combined with letrozole, anastrozole, or fulvestrant). As a first-in-class targeted therapy, it was granted FDA approval on February 3, 2015. Palbociclib is also employed in preclinical and clinical research to evaluate its efficacy against other cancer types and to investigate mechanisms of acquired resistance to targeted therapy.

This product is intended for research use only.



Structure of Palbociclib

General properties

Appearance: yellow solid

Molecular weight: 447.54

CAS number: 571190-30-2

Molecular formula: C₂₄H₂₉N₇O₂

Solubility: chloroform, DMSO, methanol

Quality control: NMR ¹H and HPLC-MS (98+%)

Storage conditions: 24 months after receipt at -20°C in the dark. Transportation: at room temperature for up to 3 weeks. Desiccate.

Legal statement: For research use only, we do not sell to patients, not for medical use.