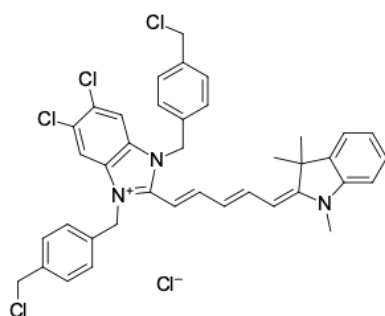


## LumiTracker® Mito Red FM

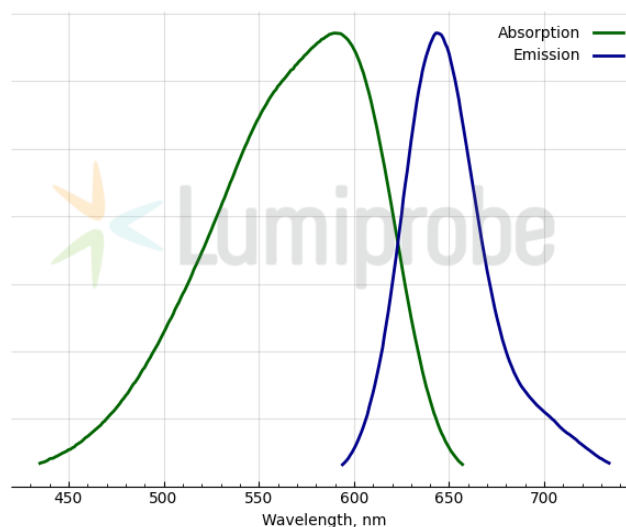
<http://www.lumiprobe.com/p/mitotracker-red-fm>

LumiTracker Mito Red FM is a cationic, red-fluorescent dye that stains mitochondria in live cells. The dye passively diffuses across the plasma membrane and selectively accumulates in active mitochondria based on their membrane potential; therefore, it is often used to assess cells' health and as a dye for mitochondrial localization.

The fluorescence of LumiTracker Mito Red FM disappears after fixation with aldehydes, so this dye is only suitable for working with living cells.



**Structure of LumiTracker Mito Red FM**



**Absorption and emission spectra of LumiTracker Mito Red FM**

### General properties

Appearance:	dark golden solid
Molecular weight:	724.00
Molecular formula:	C <sub>39</sub> H <sub>36</sub> Cl <sub>5</sub> N <sub>3</sub>
Quality control:	NMR <sup>1</sup> H and HPLC-MS (95+%)
Storage conditions:	24 months after receipt at -20°C in the dark. Transportation: at room temperature for up to 3 weeks. Desiccate.
Legal statement:	Product is offered and sold for research purposes only. Product is not tested for safety and efficacy in food, drug, medical device, cosmetic, no express or implied authorization to use for any other purpose, including, without limitation, in vitro diagnostic purposes, for humans or animals or for commercial purposes.

### Spectral properties

Excitation/absorption maximum, nm:	590
ε, L·mol <sup>-1</sup> ·cm <sup>-1</sup> :	74000
Emission maximum, nm:	643
Fluorescence quantum yield:	0.14