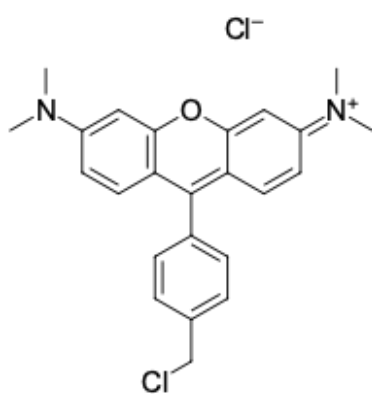


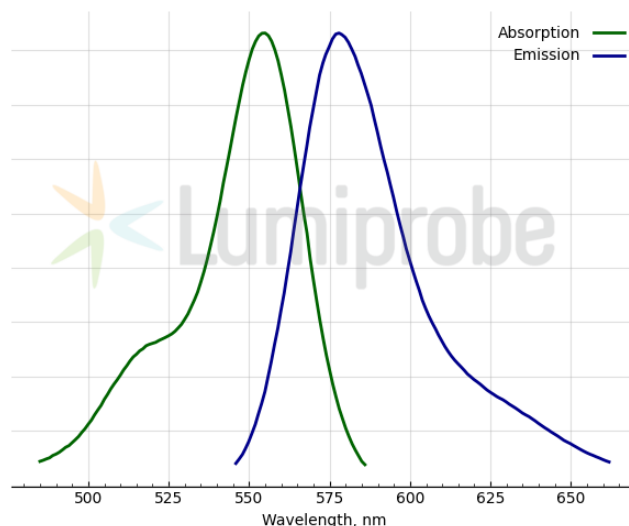
## LumiTracker® Mito Orange CMTMRos

<http://www.lumiprobe.com/p/mitotracker-orange-cmtmros>

LumiTracker Mito Orange CMTMRos is a cationic, orange-fluorescent dye for staining active mitochondria in live cells. CMTMRos is a hydrophobic compound that passively diffuses across the plasma membrane and selectively accumulates in active mitochondria based on their membrane potential. LumiTracker Mito Orange CMTMRos is compatible with aldehyde fixation. This dye is useful to indicate cell health as well as for mitochondria localization.



**Structure of Mito Orange CMTMRos**



**Absorption and emission spectra of LumiTracker Mito Orange CMTMRos**

### General properties

Appearance:	black crystals
Molecular weight:	427.38
CAS number:	199116-50-2
Molecular formula:	C <sub>24</sub> H <sub>24</sub> Cl <sub>2</sub> N <sub>2</sub> O
Quality control:	NMR <sup>1</sup> H and HPLC-MS (95+%)
Storage conditions:	24 months after receipt at -20°C in the dark. Transportation: at room temperature for up to 3 weeks. Desiccate.
Legal statement:	This Product is offered and sold for research purposes only. It has not been tested for safety and efficacy in food, drug, medical device, cosmetic, commercial or any other use. Supply does not express or imply authorization to use for any other purpose, including, without limitation, in vitro diagnostic purposes, in the manufacture of food or pharmaceutical products, in medical devices or in cosmetic products.

### Spectral properties

Excitation/absorption maximum, nm:	555
ε, L·mol <sup>-1</sup> ·cm <sup>-1</sup> :	100000
Emission maximum, nm:	578
Fluorescence quantum yield:	0.64