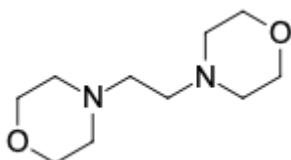


Ethylenedimorpholine

<http://www.lumiprobe.com/p/ethylenedimorpholine-1723-94-0>

The heterocyclic compound 4,4'-ethylenedimorpholine also known as 1,2-dimorpholinoethane (DME) contains morpholine rings. It is the ligand used to prepare complexes of transition metals, e.g. Mn(II), Fe(II), Co(II), Ni(II), Cu(II), Zn(II). Ligand and the related complexes have been mentioned among intermediates for the coordinate compounds with the transition metal centers for coatings, and as active substances in antibacterial activity investigations.



Structure for Ethylenedimorpholine

General properties

Appearance: white crystals

Molecular weight: 200.28

CAS number: 1723-94-0

Molecular formula: $C_{10}H_{20}N_2O_2$

IUPAC name: 4-[2-(morpholin-4-yl)ethyl]morpholine

Solubility: in water

Quality control: NMR 1H and HPLC-MS (95+%)

Storage conditions: 24 months after receipt at $-20^{\circ}C$ in the dark. Transportation: at room temperature for up to 3 weeks. Desiccate.

Legal statement: Product is offered and sold for research purposes only. Product is not tested for safety and efficacy in food, drug, medical device, cosmetic, no express or implied authorization to use for any other purpose, including, without limitation, in vitro diagnostic purposes, for humans or animals or for commercial purposes.