

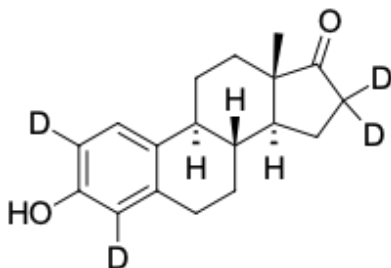
Estrone-d4

<http://www.lumiprobe.com/p/estrone-d4>

Estrone-(2,4,16,16-d4) is a deuterated analogue of estrone (E1), used as an internal standard for the quantitative determination of endogenous E1 by liquid or gas chromatography coupled with tandem mass spectrometry (MS-MS).

In clinical practice, the quantitative measurement of estrone is typically performed in parallel with estradiol (E2) assessment. The E1/E2 ratio serves as an informative diagnostic parameter. It is used for the differential diagnosis of pubertal disorders, evaluation of ovarian function and menopausal status, as well as in the examination of men with gynecomastia or suspected rare steroid metabolism disorders. Furthermore, monitoring E1 levels is a key marker for assessing the efficacy of aromatase inhibitor therapy in patients with hormone-dependent breast cancer.

The use of our product (estrone-d4) will enable the acquisition of accurate and reproducible results by compensating for analyte losses during sample preparation and matrix effects during ionization.



Structure of Estrone-d4

General properties

Appearance: beige powder

Molecular weight: 274.39

CAS number: 53866-34-5

Molecular formula: $C_{18}H_{18}D_4O_2$

Solubility: acetonitrile, DMSO

Quality control: NMR 1H and HPLC-MS (95+ %, D: 98+ %)

Storage conditions: 24 months after receipt at $-20^{\circ}C$ in the dark. Transportation: at room temperature for up to 3 weeks. Desiccate.

Legal statement: This Product is offered and sold for research purposes only. It has not been tested for safety and efficacy in food, drug, medical device, cosmetic, commercial or any other use. Supply does not express or imply authorization to use for any other purpose, including, without limitation, in vitro diagnostic purposes, in the manufacture of food or pharmaceutical products, in medical devices or in cosmetic products.