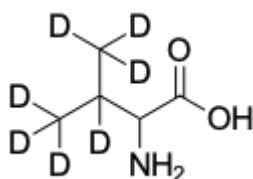


Valine-d7

<http://www.lumiprobe.com/p/dl-valine-d7>

Valine is an essential glucogenic branched-chain amino acid (BCAA). A high level of valine could be a marker of Maple syrup urine disease (MSUD), a disorder characterized by progressive ketoacidosis, caused by a deficiency in branched-chain dehydrogenase, the enzyme that catabolizes valine, isoleucine, and leucine. A low level of valine could be a sign of Crohn's disease, celiac disease or hepatic encephalopathy.

D,L-Valine-d7 is the deuterium-labeled valine and is intended for use as an analytical reference standard in LC-MS. For correct measurement of valine in blood with mass spectrometry one should use valine-d7 as an internal standard.



Structure of Valine-d7

General properties

Appearance: white powder

Molecular weight: 124.19

Molecular formula: C₅H₄D₇NO₂

Solubility: in water

Quality control: NMR ¹H and HPLC-MS (95+ %, D: 98+ %)

Storage conditions: 24 months after receipt at -20°C in the dark. Transportation: at room temperature for up to 3 weeks. Desiccate.

Legal statement: This Product is offered and sold for research purposes only. It has not been tested for safety and efficacy in food, drug, medical device, cosmetic, commercial or any other use. Supply does not express or imply authorization to use for any other purpose, including, without limitation, in vitro diagnostic purposes, in the manufacture of food or pharmaceutical products, in medical devices or in cosmetic products.