

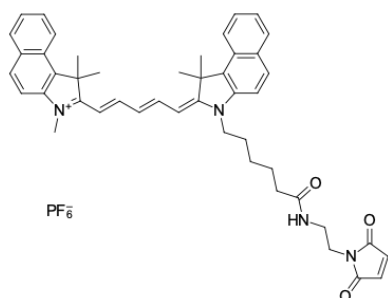
Cyanine5.5 maleimide

<http://www.lumiprobe.com/p/cy55-maleimide>

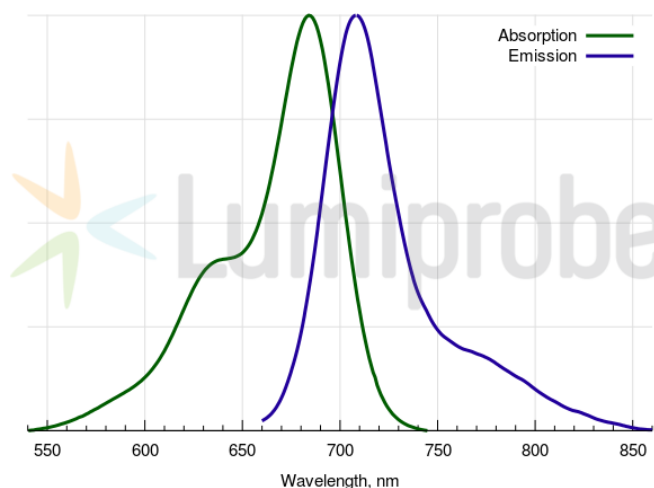
Cyanine5.5 maleimide is a thiol reactive dye which is capable of selective labeling of sulfhydryl groups in proteins, an analog of Cy5.5® maleimide.

Near infrared emission of Cyanine5.5 makes this dye suitable for bioimaging applications.

Cyanine5.5 can replace Cy5.5® and DyLight 680.



Structure of Cyanine5.5 maleimide



Cyanine5.5 absorbance and emission spectra

General properties

Appearance:	dark blue powder
Molecular weight:	850.89
CAS number:	1593644-50-8
Molecular formula:	C ₄₆ H ₄₉ F ₆ N ₄ O ₃ P
IUPAC name:	1H-Benz[e]indolium, 2-[5-[3-[6-[[2-(2,5-dihydro-2,5-dioxo-1H-pyrrol-1-yl)ethyl]amino]-6-oxohexyl]-1,3-dihydro-1,1-dimethyl-2H-benz[e]indol-2-ylidene]-1,3-pentadien-1-yl]-1,1,3-trimethyl-
Solubility:	soluble in organic solvents (DMSO, DMF, dichloromethane), practically insoluble in water (< 1 uM, < 1 mg/L)
Quality control:	NMR ¹ H, HPLC-MS (95%)
Storage conditions:	Storage: 24 months after receipt at -20°C in the dark. Transportation: at room temperature for up to 3 weeks. Avoid prolonged exposure to light. Desiccate.
Legal statement:	This Product is offered and sold for research purposes only. It has not been tested for safety and efficacy in food, drug, medical device, cosmetic, commercial or any other use. Supply does not express or imply authorization to use for any other purpose, including, without limitation, in vitro diagnostic purposes, in the manufacture of food or pharmaceutical products, in medical devices or in cosmetic products.

Spectral properties

Excitation/absorption maximum, nm:	684
ε, L·mol ⁻¹ ·cm ⁻¹ :	198000
Emission maximum, nm:	710
Fluorescence quantum yield:	0.2
CF ₂₆₀ :	0.07
CF ₂₈₀ :	0.03

