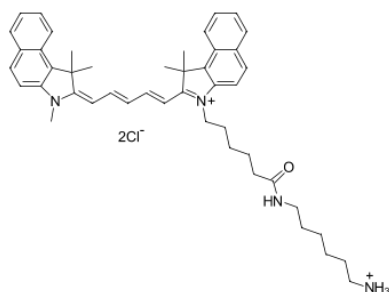


Cyanine5.5 amine

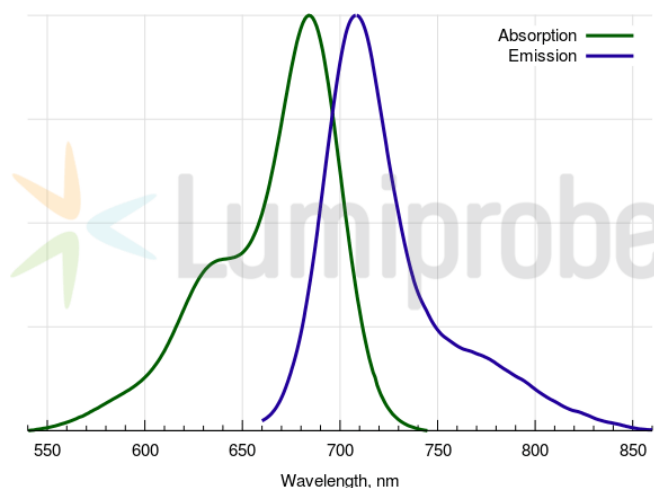
<http://www.lumiprobe.com/p/cy55-amine>

Cyanine5.5 (Cy5.5® analog) amine derivative. The dye contains a free amine group which can be conjugated with a variety of functionalities, including NHS esters, and epoxides.

Cyanine5.5 is a far red dye which works fine for live organism imaging, and applications requiring low fluorescence background.



Cy5.5 amine structure



Cy5.5 absorbance and emission spectra

General properties

| | |
|---------------------|--|
| Appearance: | dark blue powder |
| Molecular weight: | 753.88 |
| CAS number: | 2097714-44-6 (without anion), 2097714-45-7 (chloride) |
| Molecular formula: | C ₄₆ H ₅₈ Cl ₂ N ₄ O |
| Solubility: | practically insoluble in water (< 2 uM), good in polar organic solvents (DMF, DMSO, alcohols) |
| Quality control: | NMR ¹ H, HPLC-MS (95%) |
| Storage conditions: | Storage: 24 months after receipt at -20°C in the dark. Transportation: at room temperature for up to 3 weeks. Avoid prolonged exposure to light. Desiccate. |
| Legal statement: | This Product is offered and sold for research purposes only. It has not been tested for safety and efficacy in food, drug, medical device, cosmetic, commercial or any other use. Supply does not express or imply authorization to use for any other purpose, including, without limitation, in vitro diagnostic purposes, in the manufacture of food or pharmaceutical products, in medical devices or in cosmetic products. |

Spectral properties

| | |
|--|--------|
| Excitation/absorption maximum, nm: | 684 |
| ε, L·mol ⁻¹ ·cm ⁻¹ : | 198000 |
| Emission maximum, nm: | 710 |
| Fluorescence quantum yield: | 0.2 |
| CF ₂₆₀ : | 0.07 |
| CF ₂₈₀ : | 0.03 |