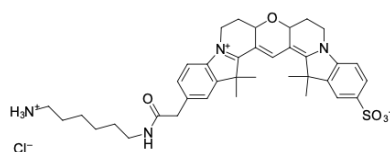


## Cyanine3B amine

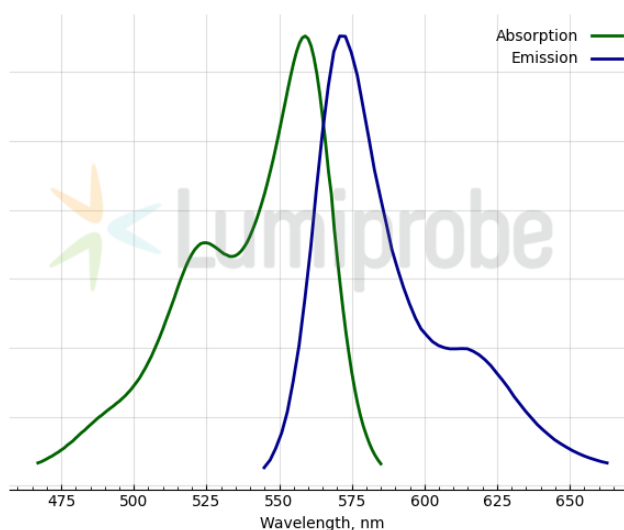
<http://www.lumiprobe.com/p/cy3b-amine>

Cyanine3B is a yellow-emitting cyanine dye that is an improved version of the Cyanine3 fluorophore with significantly higher fluorescence quantum yield and photostability.

This product is an amine-containing fluorescent dye. The amine group is separated from the fluorophore by a relatively long linker that facilitates conjugation. The aliphatic primary amine group can be coupled with various electrophiles (activated esters, epoxides, etc.) and used in enzymatic transamination labeling.



**Structure of Cyanine3B amine**



**Cyanine3B absorbance and emission spectra**

### General properties

Appearance:	dark red powder
Molecular weight:	695.33
Molecular formula:	C <sub>37</sub> H <sub>47</sub> ClN <sub>4</sub> O <sub>5</sub> S
Solubility:	good in DMF, DMSO
Quality control:	NMR <sup>1</sup> H and HPLC-MS (95+%)
Storage conditions:	24 months after receipt at -20°C in the dark. Transportation: at room temperature for up to 3 weeks. Desiccate.
Legal statement:	This Product is offered and sold for research purposes only. It has not been tested for safety and efficacy in food, drug, medical device, cosmetic, commercial or any other use. Supply does not express or imply authorization to use for any other purpose, including, without limitation, in vitro diagnostic purposes, in the manufacture of food or pharmaceutical products, in medical devices or in cosmetic products.

### Spectral properties

Excitation/absorption maximum, nm:	559
ε, L·mol <sup>-1</sup> ·cm <sup>-1</sup> :	121000
Emission maximum, nm:	571
Fluorescence quantum yield:	0.68
CF <sub>260</sub> :	0.044
CF <sub>280</sub> :	0.077