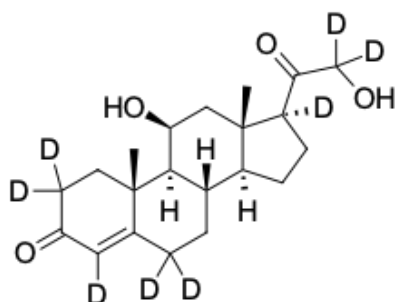


Corticosterone-d8

<http://www.lumiprobe.com/p/corticosterone-d8>

Corticosterone is a steroid hormone produced by the adrenal cortex that is involved in regulating stress, metabolism, and inflammatory responses. Its measurement in blood or saliva is used in endocrine research to assess adrenal function, study Cushing's syndrome, adrenal insufficiency, and circadian rhythm disorders. Accurate quantification using LC-MS with an internal standard is essential for both scientific research and specialized clinical diagnostics.

Using our Corticosterone-d8 as an internal standard ensures highly accurate, reproducible, and rapid measurement of hormone concentration.



Structure of Corticosterone-d8

General properties

Appearance: white solid

Molecular weight: 354.52

CAS number: 1271728-07-4

Molecular formula: $C_{21}H_{22}D_8O_4$

Quality control: NMR 1H and HPLC-MS (95+ %, D: 98+ %)

Storage conditions: 24 months after receipt at $-20^{\circ}C$ in the dark. Transportation: at room temperature for up to 3 weeks. Desiccate.

Legal statement: This Product is offered and sold for research purposes only. It has not been tested for safety and efficacy in food, drug, medical device, cosmetic, commercial or any other use. Supply does not express or imply authorization to use for any other purpose, including, without limitation, in vitro diagnostic purposes, in the manufacture of food or pharmaceutical products, in medical devices or in cosmetic products.