

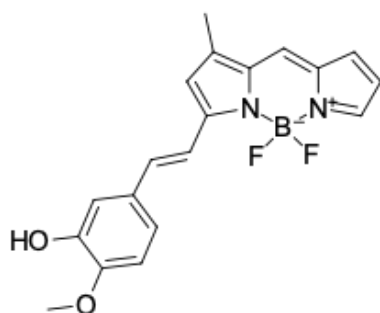
LumiCell CDr20 Microglia Stain

<http://www.lumiprobe.com/p/cdr20-microglia-stain>

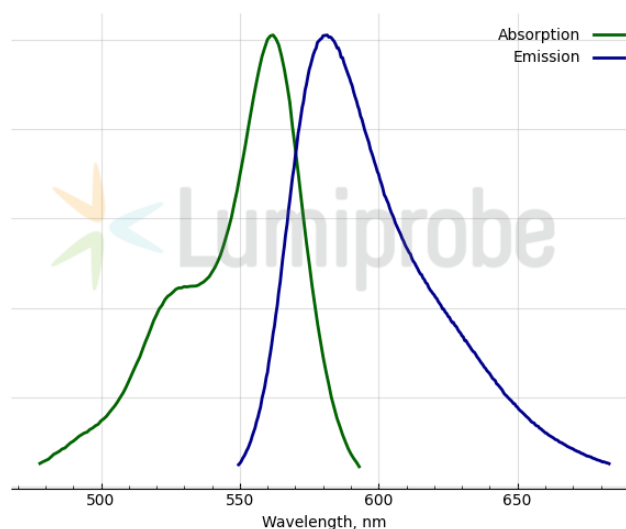
CDr20 (Cell Designation red 20) is a high-performance fluorogenic chemical probe for labeling microglia in both cell cultures and live brains. CDr20 is a substrate of microglia-specific UDP-glucuronosyltransferase Ugt1a7c. The glucuronidation of CDr20 by Ugt1a7c produces bright red fluorescence in microglial cells coinciding with the expression of markers P2ry12, Csf1r, Cx3cr1, and Iba-1 [1].

CDr20 could be a valuable tool for identifying and visualizing microglia in neural disorder studies both *in vitro* and *in vivo* and for CDr20-based fluorescent-activated microglial cell sorting (FACS).

[1] Kim B. et al. Visualizing Microglia with a Fluorescence Turn-On Ugt1a7c Substrate. Angew. Chem. Int. Ed. Engl. 2019. 58(24). 7972-7976.



Structure of CDr20



Absorption and emission spectra of CDr20 Microglia Stain

General properties

| | |
|---------------------|--|
| Appearance: | greenish black crystals |
| Molecular weight: | 354.17 |
| CAS number: | 1201643-01-7 |
| Molecular formula: | C ₁₉ H ₁₇ BF ₂ N ₂ O ₂ |
| Solubility: | DMSO |
| Quality control: | NMR ¹ H and HPLC-MS (95+%) |
| Storage conditions: | 24 months after receipt at -20°C in the dark. Transportation: at room temperature for up to 3 weeks. Desiccate. |
| Legal statement: | This Product is offered and sold for research purposes only. It has not been tested for safety and efficacy in food, drug, medical device, cosmetic, commercial or any other use. Supply does not express or imply authorization to use for any other purpose, including, without limitation, in vitro diagnostic purposes, in the manufacture of food or pharmaceutical products, in medical devices or in cosmetic products. |

Spectral properties

| | |
|--|-------|
| Excitation/absorption maximum, nm: | 562 |
| ε, L·mol ⁻¹ ·cm ⁻¹ : | 97500 |
| Emission maximum, nm: | 581 |