

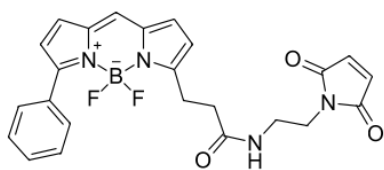
BDP R6G maleimide

<http://www.lumiprobe.com/p/bodipy-r6g-maleimide>

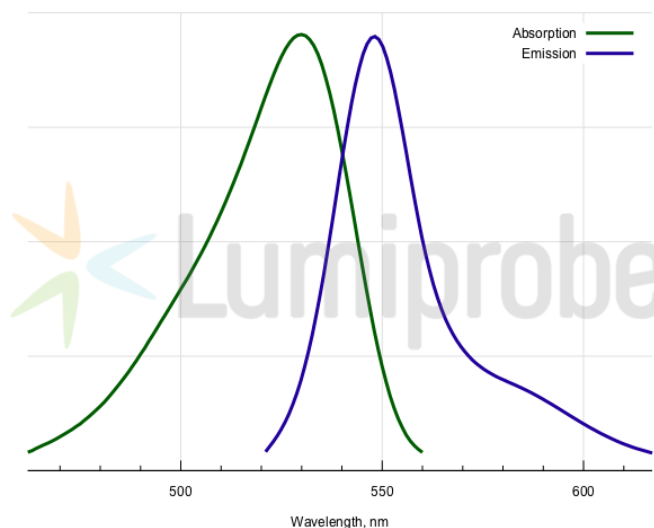
BDP R6G is a borondipyrromethene fluorophore whose absorption and emission spectra match those of rhodamine 6G (R6G) dye.

Thiol labeling is often an option of choice for the modification of proteins. Limited number of cysteine residues in proteins allow for more site-specific labeling than NHS ester labeling of amine groups, which are encountered in large number in many proteins.

This maleimide is a thiol reactive dye. Please refer to our recommended labeling protocol to achieve modification of your protein with this reagent.



Structure of BDP R6G maleimide



Absorption and emission spectra of BDP R6G

General properties

Appearance:	red or brown solid
Mass spec M+ increment:	462.2
Molecular weight:	462.26
CAS number:	2183473-32-5
Molecular formula:	C ₂₄ H ₂₁ N ₄ BF ₂ O ₃
IUPAC name:	1-Phenyl-6-(2-(2-(N-maleimido)ethylaminocarbonyl)ethyl)borondipyrromethene
Solubility:	good in DMF, DMSO, DCM
Quality control:	NMR ¹ H, HPLC-MS (95%)
Storage conditions:	Storage: 24 months after receipt at -20°C in the dark. Transportation: at room temperature for up to 3 weeks. Avoid prolonged exposure to light. Desiccate.

Spectral properties

Excitation/absorption maximum, nm:	530
Emission maximum, nm:	548
Fluorescence quantum yield:	0.96
CF ₂₆₀ :	0.17
CF ₂₈₀ :	0.18

BDP® is a trademark of Lumiprobe