

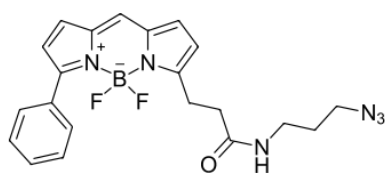
BDP R6G azide

<http://www.lumiprobe.com/p/bodipy-r6g-azide>

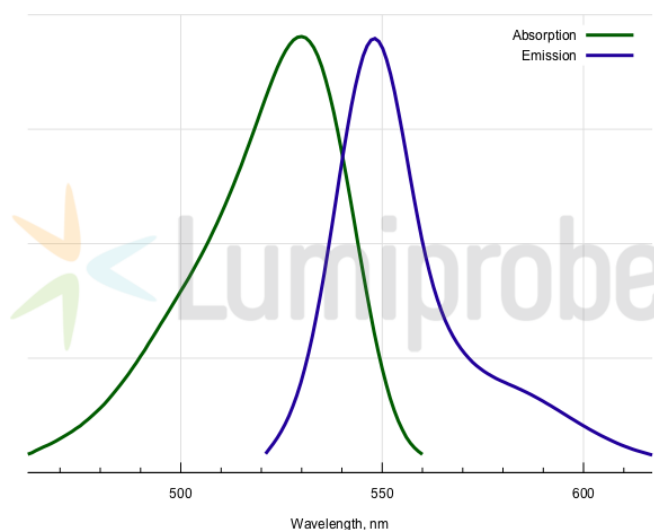
Borondipyrromethene (BDP) dyes are high performance fluorophores that exhibit excellent photostability and brightness. A number of BDP dyes is available that are tuned to match excitation and emission channels of classical xanthene and cyanine dyes.

BDP R6G is matched to R6G dye excitation and emission wavelengths. The fluorophore is an excellent alternative to R6G for various applications, including microscopy, fluorescence polarization assays, and two photon experiments.

Azide functional group allows to conjugate the fluorophore easily with various biomolecules, small molecules, and polymers using CuAAC or spAAC Click chemistry reactions.



Structure of BODIPY R6G azide



Absorption and emission spectra of BODIPY R6G

General properties

Appearance:	dark colored solid
Molecular weight:	422.24
CAS number:	2183473-23-4
Molecular formula:	C ₂₁ H ₂₁ N ₆ BF ₂ O
IUPAC name:	3-(3-(4,4-Difluoro-5-phenyl-3a,4a-diaza-4-bora-s-indacen-3-yl)propionylamino)propylazide
Solubility:	good in DMF, DMSO, DCM
Quality control:	NMR ¹ H, HPLC-MS (95%)
Storage conditions:	Storage: 24 months after receipt at -20°C in the dark. Transportation: at room temperature for up to 3 weeks. Avoid prolonged exposure to light. Desiccate.
TN VED Code:	3204190000

Spectral properties

Excitation maximum, nm:	530
Emission maximum, nm:	548
Fluorescence quantum yield:	0.96
CF ₂₆₀ :	0.17
CF ₂₈₀ :	0.18