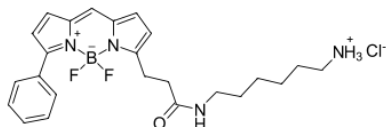


BDP R6G amine

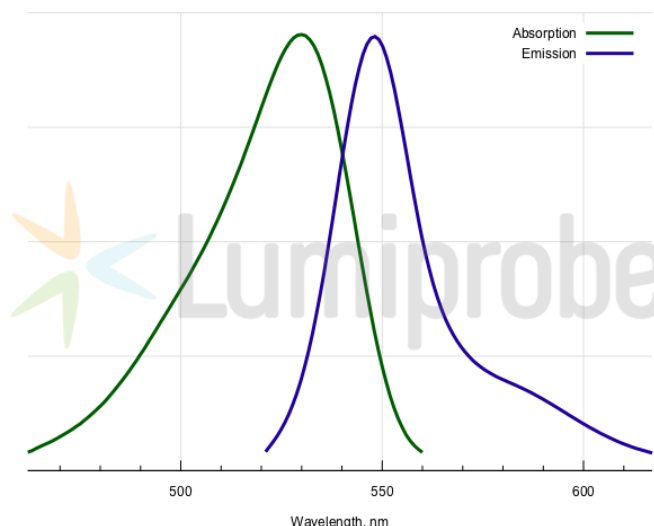
<http://www.lumiprobe.com/p/bodipy-r6g-amine>

BDP R6G is a borondipyrromethene dye matching Rhodamine 6G (R6G) channel. This derivative of the fluorophore contains aliphatic amine group in salt form.

The amine group can be conjugated with electrophiles. Amines can also be used in enzymatic transamination.



Structure of BDP R6G amine



Absorption and emission spectra of BDP R6G

General properties

Appearance:	orange to brown solid
Molecular weight:	474.78
CAS number:	2183473-06-3 (hydrochloride), 2183473-05-2
Molecular formula:	C ₂₄ H ₃₀ N ₄ BClF ₂ O
Solubility:	good in DMF, DMSO, alcohols
Quality control:	NMR ¹ H, HPLC-MS (95%)

Spectral properties

Excitation/absorption maximum, nm:	530
Emission maximum, nm:	548
Fluorescence quantum yield:	0.96
CF ₂₆₀ :	0.17
CF ₂₈₀ :	0.18

BDP® is a trademark of Lumiprobe