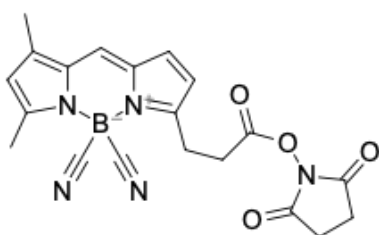


## BDPep FL NHS ester

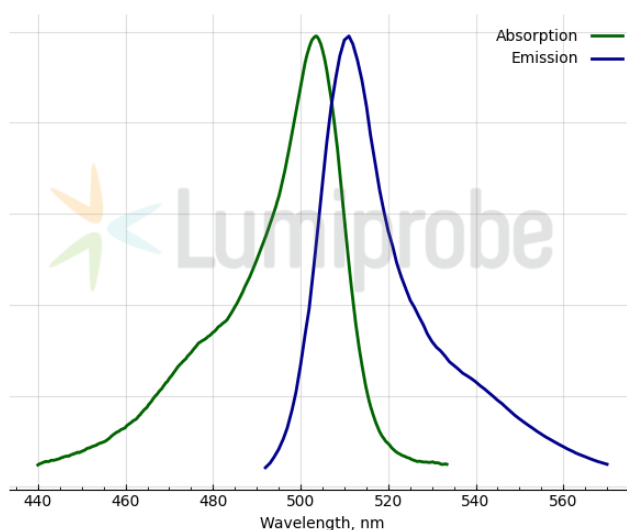
<http://www.lumiprobe.com/p/bodipy-fl-spps-nhs-ester>

BDPep FL is a bright and photostable fluorophore for the fluorescein (FAM) channel. BDPep FL is an acid-stable version of BDP FL, keeping similar spectral properties to its ancestor. The compatibility of BDPep FL with TFA with additives used in solid phase peptide synthesis (SPPS) is a crucial advantage of this dye compared to other analogs.

BDPep FL is beneficial for peptide synthesis due to its high stability and the absence of the dye decomposition to the corresponding dipyrin under acidic conditions.



**Structure of BDPep FL NHS ester**



**Absorption and emission spectra of BDPep FL**

### General properties

Appearance:	orange powder
Molecular weight:	403.21
Molecular formula:	C <sub>20</sub> H <sub>18</sub> BN <sub>5</sub> O <sub>4</sub>
Solubility:	good in DMF, DMSO, dichloromethane
Quality control:	NMR <sup>1</sup> H and HPLC-MS (95+%)
Storage conditions:	12 months after receipt at -20°C in the dark. Transportation: at room temperature for up to 3 weeks. Desiccate.

### Spectral properties

Excitation/absorption maximum, nm:	503
ε, L·mol <sup>-1</sup> ·cm <sup>-1</sup> :	80000
Emission maximum, nm:	511
Fluorescence quantum yield:	0.95

BDP® is a trademark of Lumiprobe