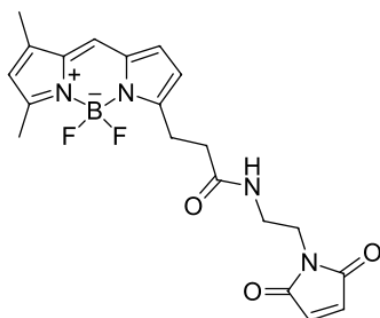


BDP FL maleimide

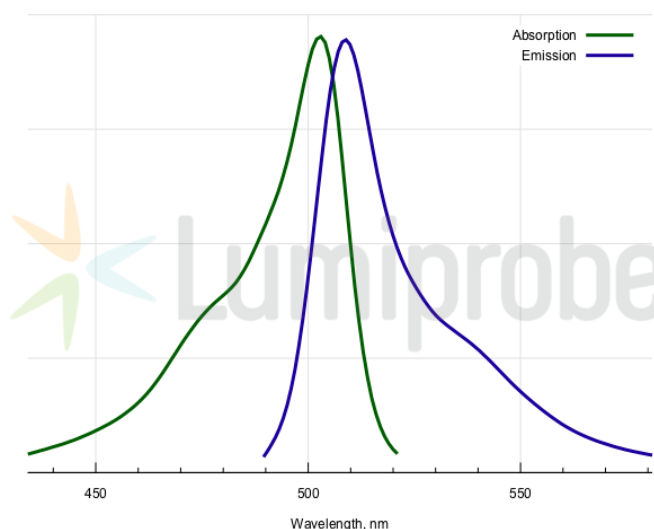
Thiol reactive BDP FL maleimide is a reactive dye for protein labeling, which has identical structure with BODIPY® FL maleimide.

BDP FL is a borondipyrromethene dye which has absorption and fluorescence spectra similar to fluorescein (FAM). However, this dye exhibits very high photostability. It is non-charged, and has low molecular weight. Its brightness is similar to fluorescein, R110 and xanthene dye derivatives like Alexa Fluor® 488.

This fluorophore is ideal for fluorescent microscopy and many other applications. The fluorophore can substitute fluorescein for almost any application, and it is compatible with any FAM-capable fluorescent instrumentation.



Structure of BODIPY FL maleimide



Absorption and emission spectra of BDP FL

General properties

Appearance:	orange solid
Mass spec M+ increment:	414.1
Molecular weight:	414.21
CAS number:	773859-49-7
Molecular formula:	C ₂₀ H ₂₁ BF ₂ N ₄ O ₃
Solubility:	Good in organic solvents (DMF, DMSO), limited in water
Quality control:	NMR 1H, HPLC-MS (95%)
Storage conditions:	Storage: 24 months after receipt at -20°C in the dark. Transportation: at room temperature for up to 3 weeks. Avoid prolonged exposure to light. Desiccate.
TN VED Code:	3204190000

Spectral properties

Excitation maximum, nm:	503
ε, L·mol ⁻¹ ·cm ⁻¹ :	92000
Emission maximum, nm:	509
Fluorescence quantum yield:	0.97
CF ₂₆₀ :	0.015
CF ₂₈₀ :	0.027