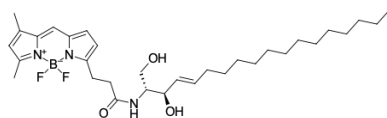


BDP® FL ceramide

<http://www.lumiprobe.com/p/bodipy-fl-ceramide-c3>

Ceramides are precursors of sphingolipids composed of sphingosine and a fatty acid joined by an amide bond. This BDP FL ceramide is a synthetic fluorescent lipid, a conjugate of green-emitting BDP FL fluorophore with sphingosine. Inside the cell, BDP FL ceramide is incorporated into the membranes of the Golgi apparatus, so this stain is widely used in cell biology to visualize the Golgi apparatus in living and fixed cells with fluorescence microscopy.



Structure of BDP FL ceramide

General properties

Appearance:	orange semisolid
Molecular weight:	573.57
CAS number:	2730893-01-1
Molecular formula:	C ₃₂ H ₅₀ BF ₂ N ₃ O ₃
Solubility:	good in many organic solvents
Quality control:	NMR ¹ H and HPLC-MS (95+%)
Storage conditions:	24 months after receipt at -20°C in the dark. Transportation: at room temperature for up to 3 weeks. Desiccate. Avoid prolonged exposure to light.
Legal statement:	Product is offered and sold for research purposes only. Product is not tested for safety and efficacy in food, drug, medical device, cosmetic, no express or implied authorization to use for any other purpose, including, without limitation, in vitro diagnostic purposes, for humans or animals or for commercial purposes.

Spectral properties

Excitation/absorption maximum, nm:	503
ε, L·mol ⁻¹ ·cm ⁻¹ :	92000
Emission maximum, nm:	509
Fluorescence quantum yield:	0.97
CF ₂₆₀ :	0.015
CF ₂₈₀ :	0.027

BDP® is a trademark of Lumiprobe Corporation