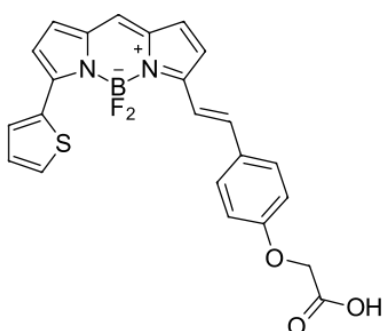


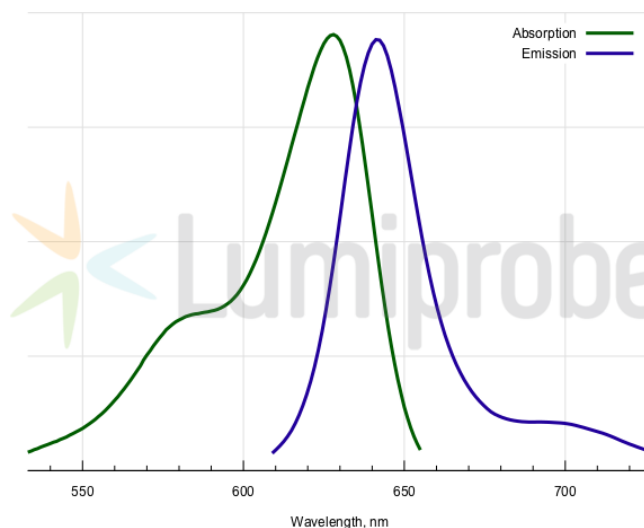
BDP 630/650 carboxylic acid

<http://www.lumiprobe.com/p/bodipy-630-650-acid>

BDP 630/650 is a bright far red fluorophore based on borondipyrromethene scaffold. This is a carboxylic acid derivative that can be activated for the coupling with amines. It can also be used as a control in negative experiments, or when chemical attachment of the dye is not necessary.



Structure of BDP 630/650 carboxylic acid



Absorption and emission spectra of BDP 630/650

General properties

Appearance:	dark powder
Molecular weight:	450.27
CAS number:	2183512-02-7
Molecular formula:	C ₂₃ H ₁₇ N ₂ BF ₂ O ₃ S
Solubility:	good in DMF, DMSO
Quality control:	NMR ¹ H, HPLC-MS (95%)
Storage conditions:	Storage: 24 months after receipt at -20°C in the dark. Transportation: at room temperature for up to 3 weeks. Avoid prolonged exposure to light. Desiccate.

Spectral properties

Excitation/absorption maximum, nm:	628
ε, L·mol ⁻¹ ·cm ⁻¹ :	97000
Emission maximum, nm:	642
Fluorescence quantum yield:	0.91
CF ₂₆₀ :	0.029
CF ₂₈₀ :	0.035

BDP® is a trademark of Lumiprobe