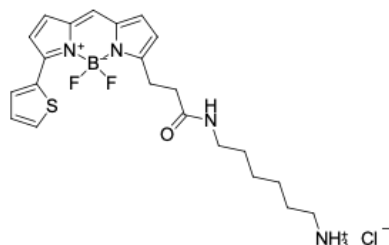


BDP 558/568 amine

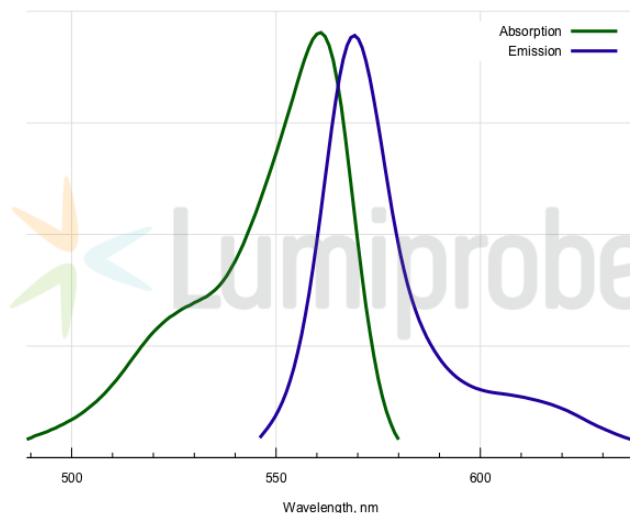
<http://www.lumiprobe.com/p/bodipy-558-568-amine>

Primary amine is a versatile functional group for bioconjugation. It is reactive against activated carboxylic acid derivatives like pentafluorophenyl esters and acyl halogenides, other electrophiles like epoxides, Michael acceptors like acrylates. It can aminate carbonyl compounds like aldehydes and ketones in reductive conditions.

BDP 558/568 is a universal borondipyrromethene dye with the emission in orange/yellow part of the spectrum.



Structure of BDP 558/568 amine



Absorption and emission spectra of BDP 558/568

General properties

Appearance:	dark colored powder
Molecular weight:	480.81
Molecular formula:	C ₂₂ H ₂₈ N ₄ BClF ₂ OS
Solubility:	good in DMF, DMSO
Quality control:	NMR ¹ H, HPLC-MS (95%)
Storage conditions:	Storage: 24 months after receipt at -20°C in the dark. Transportation: at room temperature for up to 3 weeks. Avoid prolonged exposure to light. Desiccate.

Spectral properties

Excitation maximum, nm:	561
ε, L·mol ⁻¹ ·cm ⁻¹ :	84400
Emission maximum, nm:	569
CF ₂₆₀ :	0.00
CF ₂₈₀ :	0.07