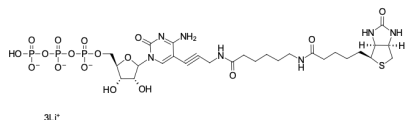


Biotin-11-CTP

<http://www.lumiprobe.com/p/biotin-11-ctp>

Biotin-11-CTP like other biotinylated nucleotides can be enzymatically incorporated into RNA. Biotin-11-CPT contains 11-atoms linker between biotin and CTP which improves avidin or streptavidin labeling in the related detection techniques.



Structure of Biotin-11-CTP

General properties

Appearance: off white solid

Molecular weight: 893.48

Molecular formula: C₂₈H₄₁Li₃N₇O₁₇P₃S

Solubility: good in water

Quality control: NMR ¹H and HPLC-MS (95+%)

Storage conditions: Storage: 12 months after receipt at -20°C in the dark. Transportation: at room temperature for up to 3 weeks. Desiccate.

Legal statement: This Product is offered and sold for research purposes only. It has not been tested for safety and efficacy in food, drug, medical device, cosmetic, commercial or any other use. Supply does not express or imply authorization to use for any other purpose, including, without limitation, in vitro diagnostic purposes, in the manufacture of food or pharmaceutical products, in medical devices or in cosmetic products.