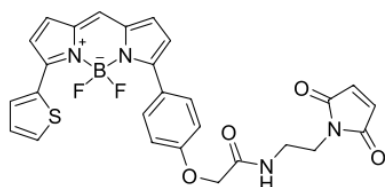


## BDP® TR maleimide

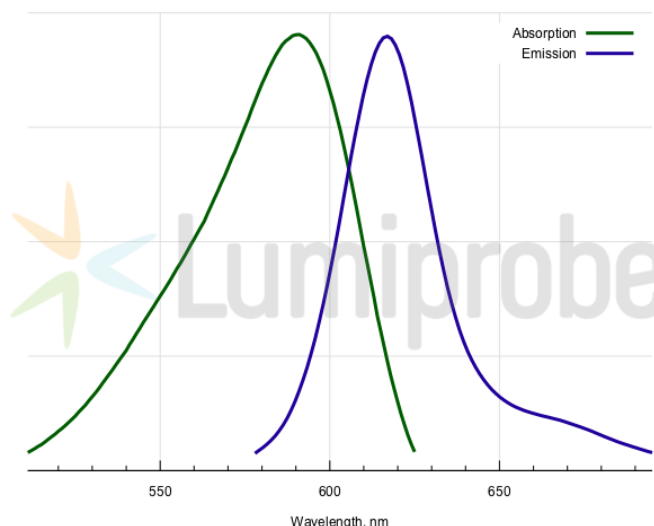
<http://www.lumiprobe.com/p/bdp-tr-maleimide>

BDP TR is a borondipyrromethene dye with absorption and emission similar to ROX. Compared to ROX, its fluorescence quantum yield and brightness is much higher.

Maleimide can be conjugated with thiol groups of proteins and peptides.



**Structure of BDP TR maleimide**



**Absorption and emission spectra of BDP TR**

### General properties

Appearance:	dark colored solid
Mass spec M+ increment:	545.1
Molecular weight:	546.35
Molecular formula:	C <sub>27</sub> H <sub>21</sub> N <sub>4</sub> BF <sub>2</sub> O <sub>4</sub> S
Solubility:	good in DCM, DMF, DMSO
Quality control:	NMR <sup>1</sup> H, HPLC-MS (95%)
Storage conditions:	Storage: 24 months after receipt at -20°C in the dark. Transportation: at room temperature for up to 3 weeks. Avoid prolonged exposure to light. Desiccate.
Legal statement:	This Product is offered and sold for research purposes only. It has not been tested for safety and efficacy in food, drug, medical device, cosmetic, commercial or any other use. Supply does not express or imply authorization to use for any other purpose, including, without limitation, in vitro diagnostic purposes, in the manufacture of food or pharmaceutical products, in medical devices or in cosmetic products.

### Spectral properties

Excitation/absorption maximum, nm:	589
ε, L·mol <sup>-1</sup> ·cm <sup>-1</sup> :	69000
Emission maximum, nm:	616
Fluorescence quantum yield:	0.9
CF <sub>260</sub> :	0.15
CF <sub>280</sub> :	0.19

BDP® is a trademark of Lumiprobe