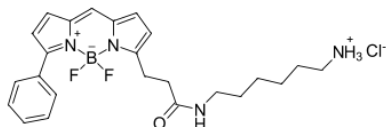


BDP® R6G amine

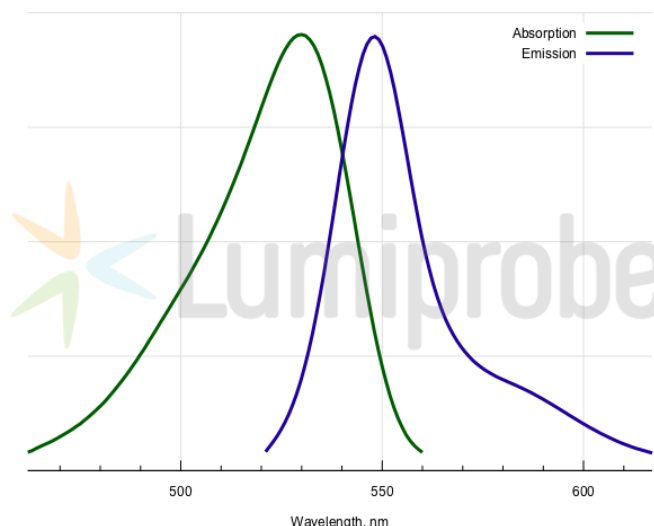
<http://www.lumiprobe.com/p/bdp-r6g-amine>

BDP R6G is a borondipyrromethene dye matching Rhodamine 6G (R6G) channel. This derivative of the fluorophore contains aliphatic amine group in salt form.

The amine group can be conjugated with electrophiles. Amines can also be used in enzymatic transamination.



Structure of BDP R6G amine



Absorption and emission spectra of BDP R6G

General properties

| | |
|--------------------|--|
| Appearance: | orange to brown solid |
| Molecular weight: | 474.78 |
| CAS number: | 2183473-06-3 (hydrochloride), 2183473-05-2 |
| Molecular formula: | C ₂₄ H ₃₀ N ₄ BClF ₂ O |
| Solubility: | good in DMF, DMSO, alcohols |
| Quality control: | NMR ¹ H, HPLC-MS (95%) |
| Legal statement: | This Product is offered and sold for research purposes only. It has not been tested for safety and efficacy in food, drug, medical device, cosmetic, commercial or any other use. Supply does not express or imply authorization to use for any other purpose, including, without limitation, in vitro diagnostic purposes, in the manufacture of food or pharmaceutical products, in medical devices or in cosmetic products. |

Spectral properties

| | |
|------------------------------------|------|
| Excitation/absorption maximum, nm: | 530 |
| Emission maximum, nm: | 548 |
| Fluorescence quantum yield: | 0.96 |
| CF ₂₆₀ : | 0.17 |
| CF ₂₈₀ : | 0.18 |

BDP® is a trademark of Lumiprobe