

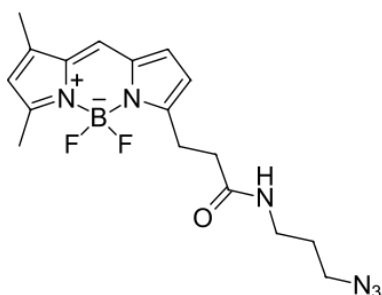
BDP® FL azide

<http://www.lumiprobe.com/p/bdp-fl-azide>

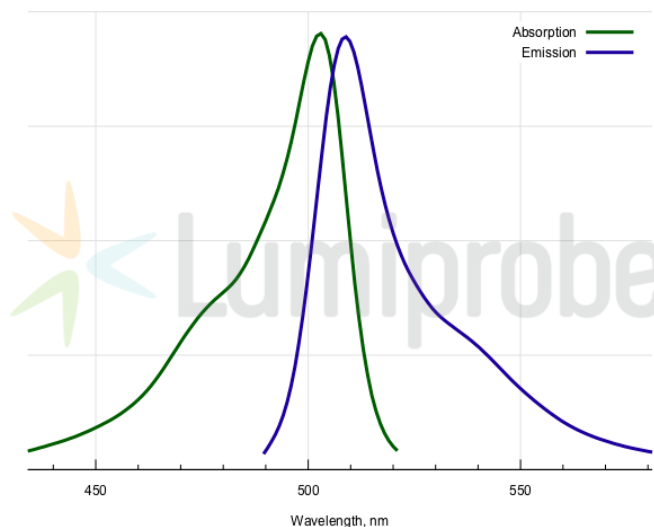
BDP FL azide is a click chemistry capable of bright and photostable dye for the FAM channel.

This green-emitting fluorophore is compatible with all types of fluorescence measuring instruments for FAM (fluorescein).

The fluorophore is a representative of the borondipyrromethene class of fluorescent dyes, which possess high quantum yields in aqueous environments and high stability towards photobleaching.



Structure of BODIPY FL azide



Absorption and emission spectra of BDP FL

General properties

| | |
|---------------------|--|
| Appearance: | orange solid |
| Molecular weight: | 374.20 |
| CAS number: | 1379771-95-5, 2243566-18-7 |
| Molecular formula: | C ₁₇ H ₂₁ BF ₂ N ₆ O |
| Solubility: | soluble in organic solvents (alcohols, DMF, DMSO) |
| Quality control: | NMR ¹ H, HPLC-MS (95%) |
| Storage conditions: | Storage: 24 months after receipt at -20°C in the dark. Transportation: at room temperature for up to 3 weeks. Avoid prolonged exposure to light. |
| Legal statement: | This Product is offered and sold for research purposes only. It has not been tested for safety and efficacy in food, drug, medical device, cosmetic, commercial or any other use. Supply does not express or imply authorization to use for any other purpose, including, without limitation, in vitro diagnostic purposes, in the manufacture of food or pharmaceutical products, in medical devices or in cosmetic products. |

Spectral properties

| | |
|--|-------|
| Excitation/absorption maximum, nm: | 503 |
| ε, L·mol ⁻¹ ·cm ⁻¹ : | 92000 |
| Emission maximum, nm: | 509 |
| Fluorescence quantum yield: | 0.97 |
| CF ₂₆₀ : | 0.015 |
| CF ₂₈₀ : | 0.027 |