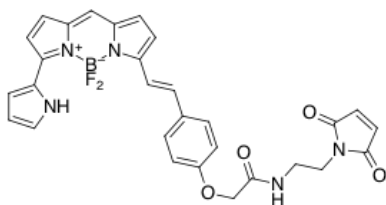


BDP® 650/665 maleimide

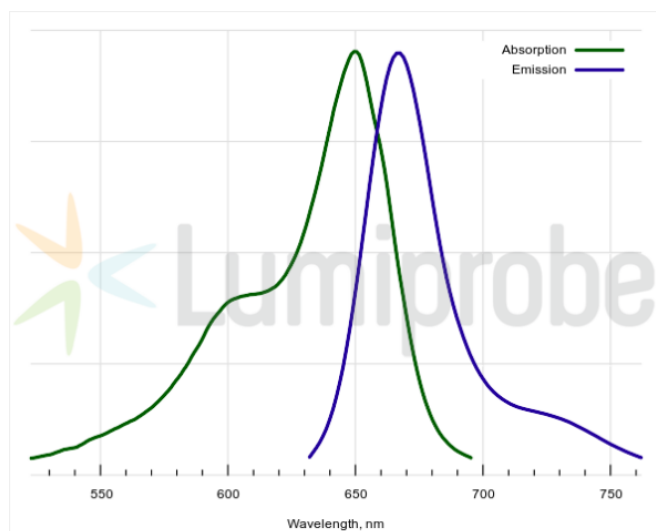
<http://www.lumiprobe.com/p/bdp-650-665-maleimide>

BDP 650/665 is a bright, red-emitting fluorophore for Cyanine5 (Cy5) channel. The dye has a high molar extinction coefficient and a good emission quantum yield. The dye is moderately hydrophobic but can be used to label biomolecules in an aqueous environment, so it is a good alternative to Cy5.

Maleimide is a thiol-reactive group. The compound can be used for the labeling of cysteine residues of proteins and peptides, among other SH-containing molecules.



Structure of BDP 650/665 maleimide



Absorption and emission spectra of BDP 650/665

General properties

Appearance:	dark colored solid
Mass spec M+ increment:	555.2
Molecular weight:	555.34
Molecular formula:	C ₂₉ H ₂₄ N ₅ BF ₂ O ₄
Solubility:	good in DMF, DMSO, low in water
Quality control:	NMR ¹ H, HPLC-MS (95%)
Storage conditions:	Storage: 24 months after receipt at -20°C in the dark. Transportation: at room temperature for up to 3 weeks. Avoid prolonged exposure to light. Desiccate.
Legal statement:	This Product is offered and sold for research purposes only. It has not been tested for safety and efficacy in food, drug, medical device, cosmetic, commercial or any other use. Supply does not express or imply authorization to use for any other purpose, including, without limitation, in vitro diagnostic purposes, in the manufacture of food or pharmaceutical products, in medical devices or in cosmetic products.

Spectral properties

Excitation/absorption maximum, nm:	649
ε, L·mol ⁻¹ ·cm ⁻¹ :	94000
Emission maximum, nm:	667
Fluorescence quantum yield:	0.52
CF ₂₆₀ :	0.04
CF ₂₈₀ :	0.04