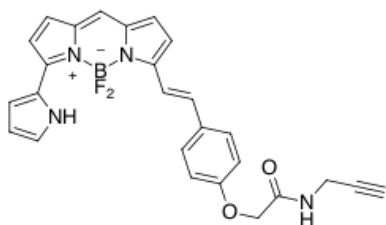


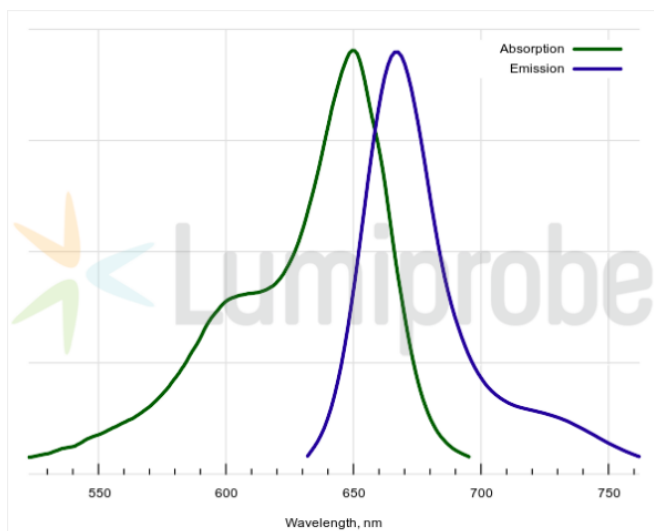
## BDP® 650/665 alkyne

<http://www.lumiprobe.com/p/bdp-650-665-alkyne>

BDP 650/665 alkyne is a red-emitting BDP dye derivative carrying a terminal alkyne group for a copper-catalyzed conjugation with azides. Absorption and emission spectra of BDP 650/665 are designed to fit Cy5-channel of various instruments.



**Structure of BDP 650/665 alkyne**



**Absorption and emission spectra of BDP 650/665**

### General properties

Appearance:	dark colored solid
Molecular weight:	470.28
CAS number:	2006345-40-8
Molecular formula:	C <sub>26</sub> H <sub>21</sub> N <sub>4</sub> BF <sub>2</sub> O <sub>2</sub>
Solubility:	soluble in DMF, DMSO
Quality control:	NMR <sup>1</sup> H, HPLC-MS (95%)
Storage conditions:	Storage: 24 months after receipt at -20°C in the dark. Transportation: at room temperature for up to 3 weeks. Avoid prolonged exposure to light. Desiccate.
Legal statement:	This Product is offered and sold for research purposes only. It has not been tested for safety and efficacy in food, drug, medical device, cosmetic, commercial or any other use. Supply does not express or imply authorization to use for any other purpose, including, without limitation, in vitro diagnostic purposes, in the manufacture of food or pharmaceutical products, in medical devices or in cosmetic products.

### Spectral properties

Excitation/absorption maximum, nm:	649
ε, L·mol <sup>-1</sup> ·cm <sup>-1</sup> :	94000
Emission maximum, nm:	667
Fluorescence quantum yield:	0.52
CF <sub>260</sub> :	0.04
CF <sub>280</sub> :	0.04

BDP® is a trademark of Lumiprobe