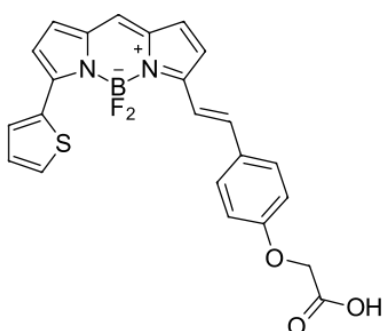


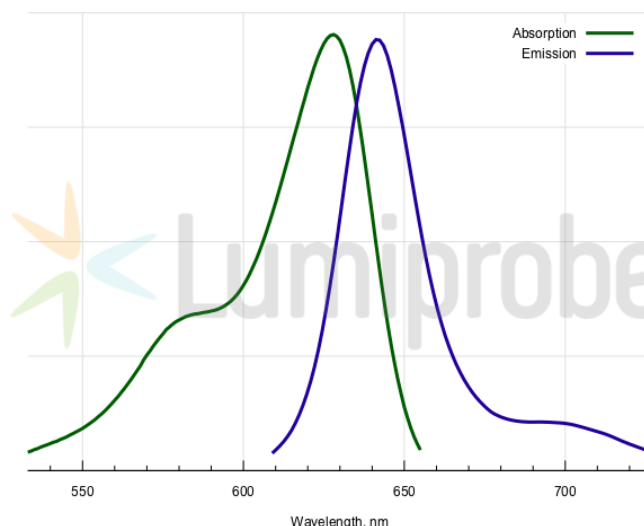
## BDP® 630/650 carboxylic acid

<http://www.lumiprobe.com/p/bdp-630-650-acid>

BDP 630/650 is a bright far red fluorophore based on borondipyrromethene scaffold. This is a carboxylic acid derivative that can be activated for the coupling with amines. It can also be used as a control in negative experiments, or when chemical attachment of the dye is not necessary.



**Structure of BDP 630/650 carboxylic acid**



**Absorption and emission spectra of BDP 630/650**

### General properties

Appearance:	dark powder
Molecular weight:	450.27
CAS number:	2183512-02-7
Molecular formula:	C <sub>23</sub> H <sub>17</sub> N <sub>2</sub> BF <sub>2</sub> O <sub>3</sub> S
Solubility:	good in DMF, DMSO
Quality control:	NMR <sup>1</sup> H, HPLC-MS (95%)
Storage conditions:	Storage: 24 months after receipt at -20°C in the dark. Transportation: at room temperature for up to 3 weeks. Avoid prolonged exposure to light. Desiccate.
Legal statement:	This Product is offered and sold for research purposes only. It has not been tested for safety and efficacy in food, drug, medical device, cosmetic, commercial or any other use. Supply does not express or imply authorization to use for any other purpose, including, without limitation, in vitro diagnostic purposes, in the manufacture of food or pharmaceutical products, in medical devices or in cosmetic products.

### Spectral properties

Excitation/absorption maximum, nm:	628
ε, L·mol <sup>-1</sup> ·cm <sup>-1</sup> :	97000
Emission maximum, nm:	642
Fluorescence quantum yield:	0.91
CF <sub>260</sub> :	0.029
CF <sub>280</sub> :	0.035

BDP® is a trademark of Lumiprobe