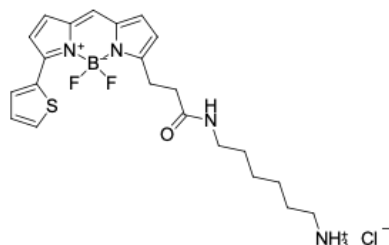


## BDP® 558/568 amine

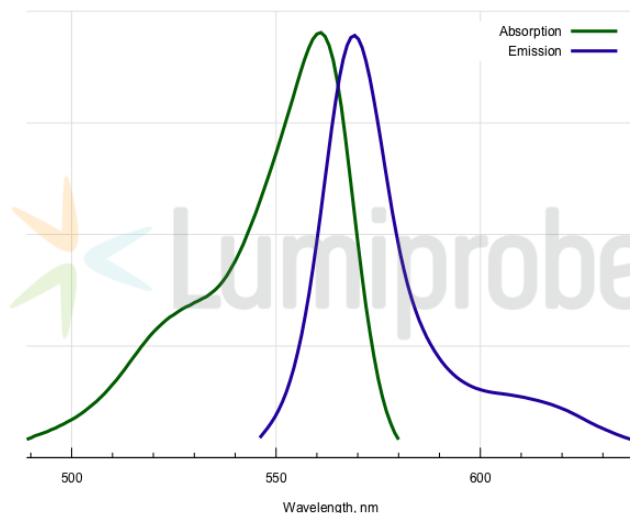
<http://www.lumiprobe.com/p/bdp-558-568-amine>

Primary amine is a versatile functional group for bioconjugation. It is reactive against activated carboxylic acid derivatives like pentafluorophenyl esters and acyl halogenides, other electrophiles like epoxides, and Michael acceptors like acrylates. It can aminate carbonyl compounds like aldehydes and ketones in reductive conditions.

BDP 558/568 is a universal borondipyrromethene dye with an emission in the orange/yellow part of the spectrum.



**Structure of BDP 558/568 amine**



**Absorption and emission spectra of BDP 558/568**

### General properties

Appearance:	dark colored powder
Molecular weight:	480.81
Molecular formula:	C <sub>22</sub> H <sub>28</sub> N <sub>4</sub> BClF <sub>2</sub> OS
Solubility:	good in DMF, DMSO
Quality control:	NMR <sup>1</sup> H, HPLC-MS (95%)
Storage conditions:	Storage: 24 months after receipt at -20°C in the dark. Transportation: at room temperature for up to 3 weeks. Avoid prolonged exposure to light. Desiccate.
Legal statement:	This Product is offered and sold for research purposes only. It has not been tested for safety and efficacy in food, drug, medical device, cosmetic, commercial or any other use. Supply does not express or imply authorization to use for any other purpose, including, without limitation, in vitro diagnostic purposes, in the manufacture of food or pharmaceutical products, in medical devices or in cosmetic products.

### Spectral properties

Excitation/absorption maximum, nm:	561
ε, L·mol <sup>-1</sup> ·cm <sup>-1</sup> :	84400
Emission maximum, nm:	569
Fluorescence quantum yield:	0.68
CF <sub>260</sub> :	0.00
CF <sub>280</sub> :	0.07