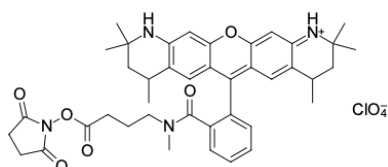


ATT 550 NHS ester

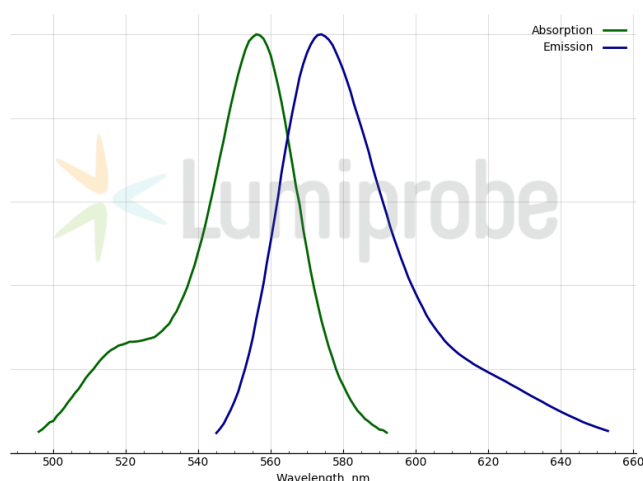
<http://www.lumiprobe.com/p/atto-550-nhs-ester>

ATT 550 NHS ester is an amine-reactive dye for labeling various amine-containing molecules in the aqueous phase. To prepare labeling solutions, dissolve the reagent in anhydrous, amine-free DMF, or DMSO immediately before use.

ATT 550 is a yellow-fluorescent Rhodamine 6G and Rhodamine B-related dye with high fluorescence quantum yield, strong thermal and photostability, and excellent water solubility. ATT 550 is a cationic dye. After coupling to a substrate, the dye carries a net electrical charge of +1.



Structure of ATT 550 NHS ester



Absorption and emission spectra of ATT 550

General properties

Appearance:	dark reddish-brown crystals
Molecular weight:	791.30
Molecular formula:	C ₄₁ H ₄₇ ClN ₄ O ₁₀
Solubility:	good in acetonitrile, DMF, methylene chloride; moderate in ethyl acetate; poor in water; insoluble in diethyl ether
Quality control:	NMR ¹ H and HPLC-MS (95+%)
Storage conditions:	12 months after receipt at -20°C in the dark. Transportation: at room temperature for up to 3 weeks. Desiccate.
Legal statement:	This Product is offered and sold for research purposes only. It has not been tested for safety and efficacy in food, drug, medical device, cosmetic, commercial or any other use. Supply does not express or imply authorization to use for any other purpose, including, without limitation, in vitro diagnostic purposes, in the manufacture of food or pharmaceutical products, in medical devices or in cosmetic products.

Spectral properties

Excitation/absorption maximum, nm:	556
Emission maximum, nm:	574
CF ₂₆₀ :	0.27
CF ₂₈₀ :	0.20