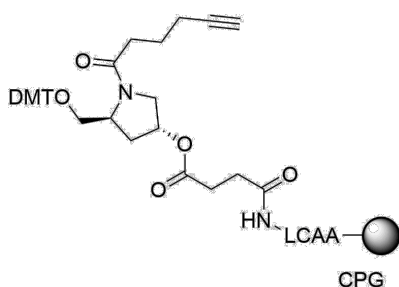


## Alkyne CPG 1000A

<http://www.lumiprobe.com/p/alkyne-cpg-1000>

Controlled pore glass solid support for synthesizing 3'-alkyne modified oligonucleotides. The support allows the preparation of oligos of up to 100mers. The modification is stable in standard deblocking conditions and can tolerate ammonia, AMA, and other basic reagents.



**Structure of Alkyne CPG 1000A**

### General properties

Appearance: white beads

Legal statement: This Product is offered and sold for research purposes only. It has not been tested for safety and efficacy in food, drug, medical device, cosmetic, commercial or any other use. Supply does not express or imply authorization to use for any other purpose, including, without limitation, in vitro diagnostic purposes, in the manufacture of food or pharmaceutical products, in medical devices or in cosmetic products.

### Oligo synthesis details

Pore size, Å: 1000

Typical loading,  $\mu\text{mol/g}$ : 40–70

Coupling conditions: standard coupling, identical to normal nucleobases

Cleavage conditions: ammonia, 2 h at room temperature