

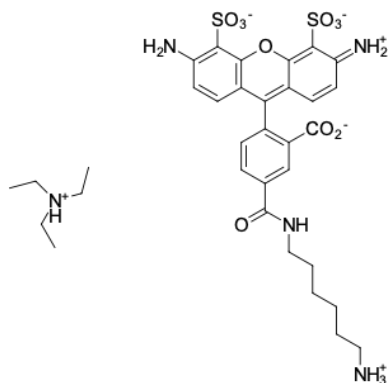
## AF 488 amine

<http://www.lumiprobe.com/p/alexa-fluor-488-amine-5>

AF 488 is a stable dye over a broad pH range (from 4 to 10) with the fluorescence peak in the green region (at 519 nm).

Conjugates of biomolecules with AF 488 can be used in flow cytometry, for example in multicolor staining. AF 488 is also used in cell microscopy due to its high photostability.

AF 488 amine is soluble in water and can be conjugated with electrophiles and participate in enzymatic transamination.



**Structure of AF 488 amine**

### General properties

|                     |  |
|---------------------|--|
| Appearance:         | orange crystals  |
| Molecular weight:   | 733.87   |
| Molecular formula:  | $C_{33}H_{43}N_5O_{10}S_2$   |
| Solubility:         | good in water, DMF, DMSO   |
| Quality control:    | NMR $^1H$ and HPLC-MS (95+%)   |
| Storage conditions: | 24 months after receipt at -20°C in the dark. Transportation: at room temperature for up to 3 weeks. Desiccate. Avoid prolonged exposure to light. |

### Spectral properties

|   |       |
|---|-------|
| Excitation/absorption maximum, nm:              | 495   |
| $\epsilon$ , $L \cdot mol^{-1} \cdot cm^{-1}$ : | 71800 |
| Emission maximum, nm:                           | 519   |
| Fluorescence quantum yield:                     | 0.91  |
| $CF_{260}$ :                                    | 0.16  |
| $CF_{280}$ :                                    | 0.10  |