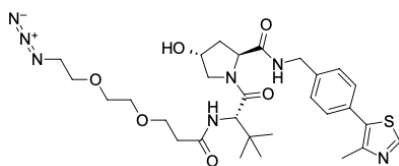


(S,R,S)-AHPC-PEG2-C2-azide

<http://www.lumiprobe.com/p/ahpc-peg2-c2-azide>

Proteolysis targeting chimeras (PROTACs) are cell-permeable heterobifunctional molecules that can remove specific proteins from the cell. One end of such molecule contains a ligand to bind to the target, and the second end recruits the E3 ligase complex. Close proximity results in substrate polyubiquitination and subsequent protein degradation by cellular proteasome.

(S,R,S)-AHPC-C2-azide is a protein degrader building block for the synthesis of molecules for targeted protein degradation and PROTAC technologies. This conjugate contains a von Hippel-Lindau (VHL)-recruiting ligand and a PEG2-C2 crosslinker with an azide function group, which can be conjugated to alkyne-functionalized linkers and target protein ligands through click chemistry reactions.



Structure of (S,R,S)-AHPC-PEG2-C2-azide

General properties

Appearance: yellow glassy oil

Molecular weight: 615.75

CAS number: 2597167-22-9

Molecular formula: C₂₉H₄₁N₇O₆S

Solubility: methanol, ethyl acetate, DCM, THF, DMF, DMSO

Quality control: NMR ¹H and HPLC-MS (95+%)

Storage conditions: 24 months after receipt at -20°C in the dark. Transportation: at room temperature for up to 3 weeks. Desiccate.

Legal statement: This Product is offered and sold for research purposes only. It has not been tested for safety and efficacy in food, drug, medical device, cosmetic, commercial or any other use. Supply does not express or imply authorization to use for any other purpose, including, without limitation, in vitro diagnostic purposes, in the manufacture of food or pharmaceutical products, in medical devices or in cosmetic products.