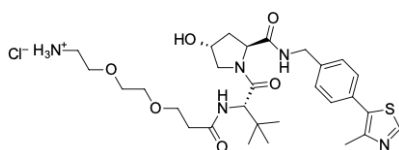


## (S,R,S)-AHPC-PEG2-C2-amine

<http://www.lumiprobe.com/p/ahpc-peg2-c2-amine>

Proteolysis targeting chimeras (PROTACs) are cell-permeable heterobifunctional molecules that can remove specific proteins from the cell. One end of such molecule contains a ligand to bind to the target, and the second end recruits the E3 ligase complex. Close proximity results in substrate polyubiquitination and subsequent protein degradation by cellular proteasome.

(S,R,S)-AHPC-C2-amine is a protein degrader building block for synthesizing molecules for targeted protein degradation and PROTAC technologies. This conjugate contains a von Hippel-Lindau (VHL)-recruiting ligand and a PEG2-C2 crosslinker with an amine function group, which can be conjugated to other functionalized linkers and target protein ligands.



**Structure of (S,R,S)-AHPC-PEG2-C2-amine**

### General properties

Appearance: beige powder

Molecular weight: 626.21

CAS number: 2138439-54-8

Molecular formula: C<sub>29</sub>H<sub>44</sub>ClN<sub>5</sub>O<sub>6</sub>S

Solubility: methanol, ethyl acetate, DCM, THF, DMF, DMSO

Quality control: NMR <sup>1</sup>H and HPLC-MS (95+%)

Storage conditions: 24 months after receipt at -20°C in the dark. Transportation: at room temperature for up to 3 weeks. Desiccate.

Legal statement: This Product is offered and sold for research purposes only. It has not been tested for safety and efficacy in food, drug, medical device, cosmetic, commercial or any other use. Supply does not express or imply authorization to use for any other purpose, including, without limitation, in vitro diagnostic purposes, in the manufacture of food or pharmaceutical products, in medical devices or in cosmetic products.