

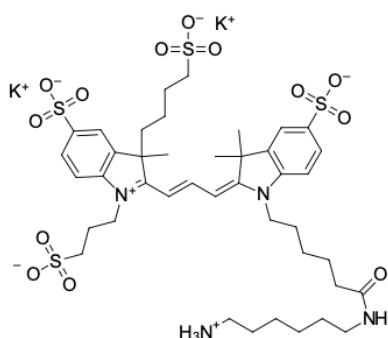
AF 555 amine

<http://www.lumiprobe.com/p/af-555-amine>

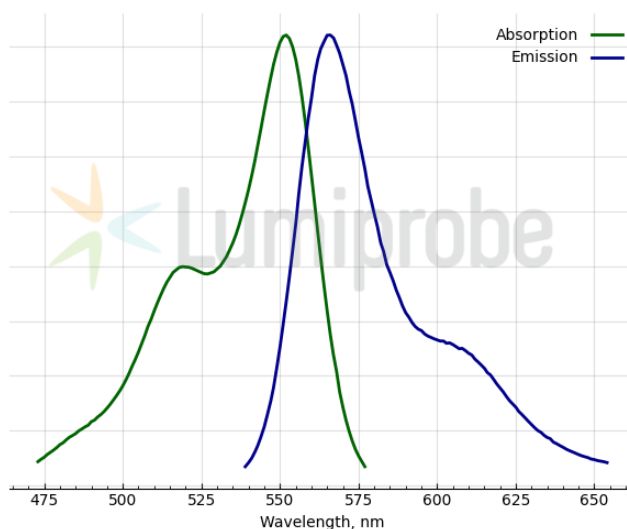
AF 555 is a stable dye over a broad pH range (from 4 to 10) with the fluorescence peak in the yellow region (at 566 nm).

Conjugates of biomolecules with AF 555 can be used in flow cytometry, for example in multicolor staining. AF 555 is also used in cell microscopy due to its high photostability.

AF 555 amine is soluble in water and can be conjugated with electrophiles and participate in enzymatic transamination.



Structure of AF 555 amine



Absorption and emission spectra of AF 555

General properties

Appearance:	dark red solid
Molecular weight:	1021.39
Molecular formula:	C ₄₁ H ₅₆ K ₂ N ₄ O ₁₃ S ₄
Solubility:	good in water, DMSO
Quality control:	NMR ¹ H and HPLC-MS (95+%)
Storage conditions:	24 months after receipt at -20°C in the dark. Transportation: at room temperature for up to 3 weeks. Desiccate. Avoid prolonged exposure to light.
Legal statement:	This Product is offered and sold for research purposes only. It has not been tested for safety and efficacy in food, drug, medical device, cosmetic, commercial or any other use. Supply does not express or imply authorization to use for any other purpose, including, without limitation, in vitro diagnostic purposes, in the manufacture of food or pharmaceutical products, in medical devices or in cosmetic products.

Spectral properties

Excitation/absorption maximum, nm:	552
ε, L·mol ⁻¹ ·cm ⁻¹ :	152000
Emission maximum, nm:	566
Fluorescence quantum yield:	0.14