

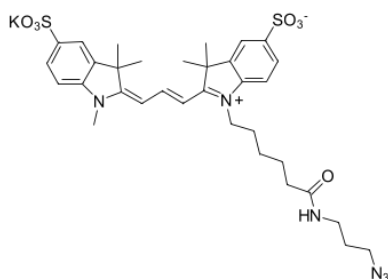
sulfo-Cyanine3 azide

<http://www.lumiprobe.com/p/sulfo-cy3-azide>

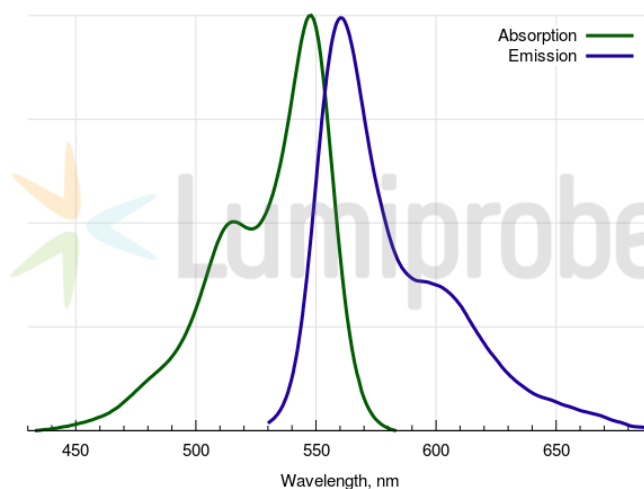
sulfo-Cyanine3 azide is a water-soluble dye azide for click chemistry. Absorbance and emission of the dye are identical to Cy3® fluorophore.

Brightness and photostability of the fluorophore, together with high water solubility, make this reagent an ideal choice for click chemistry labeling various molecules in the aqueous phase.

Click reaction can be carried out in pure water without the need to use organic co-solvent. The reagent is designed for the labeling of sensitive molecules and even intact biological objects.



Sulfo-Cyanine3 azide structure



Sulfo-Cyanine3 absorbance and emission spectra

General properties

Appearance:	dark red crystals
Molecular weight:	736.94
CAS number:	2055138-89-9 (sodium salt), 1658416-54-6
Molecular formula:	C ₃₃ H ₄₁ N ₆ KO ₇ S ₂
Solubility:	soluble in water (0.62 M = 46 g/L), DMF, DMSO
Quality control:	NMR ¹ H, HPLC-MS (95%)
Storage conditions:	Storage: 24 months after receipt at -20°C in the dark. Transportation: at room temperature for up to 3 weeks. Avoid prolonged exposure to light.

Spectral properties

Excitation/absorption maximum, nm:	548
ε, L·mol ⁻¹ ·cm ⁻¹ :	162000
Emission maximum, nm:	563
Fluorescence quantum yield:	0.1
CF ₂₆₀ :	0.03
CF ₂₈₀ :	0.06

Cy® is a trademark of GE Healthcare.