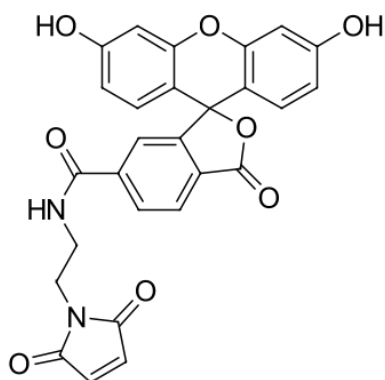


## FAM maleimide, 6-isomer

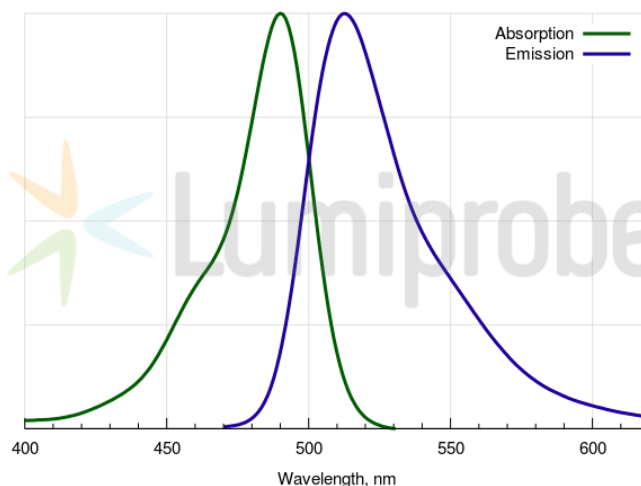
<http://www.lumiprobe.com/p/fam-maleimide-6>

FAM (fluorescein) is a bright fluorophore which is compatible with various fluorescence detection instruments. FAM is a universal dye that is useful for microscopy, qPCR and many other methods as well as for FRET-based and fluorescence polarization based binding assays.

FAM maleimide is a thiol reactive dye for the labeling of proteins, peptides, and other thiolated molecules.



**FAM maleimide, 6-isomer structure**



**FAM absorbance and emission spectra**

### General properties

Appearance:	yellow solid
Mass spec M+ increment:	498.4
Molecular weight:	498.44
Molecular formula:	C <sub>27</sub> H <sub>18</sub> N <sub>2</sub> O <sub>8</sub>
Solubility:	good in DMSO, DMF
Quality control:	NMR <sup>1</sup> H, HPLC-MS (95%)
Storage conditions:	Storage: 24 months after receipt at -20°C in the dark. Transportation: at room temperature for up to 3 weeks. Avoid prolonged exposure to light. Desiccate.

### Spectral properties

Excitation/absorption maximum, nm:	492
ε, L·mol <sup>-1</sup> ·cm <sup>-1</sup> :	74000
Emission maximum, nm:	517
Fluorescence quantum yield:	0.93
CF <sub>260</sub> :	0.22
CF <sub>280</sub> :	0.17